

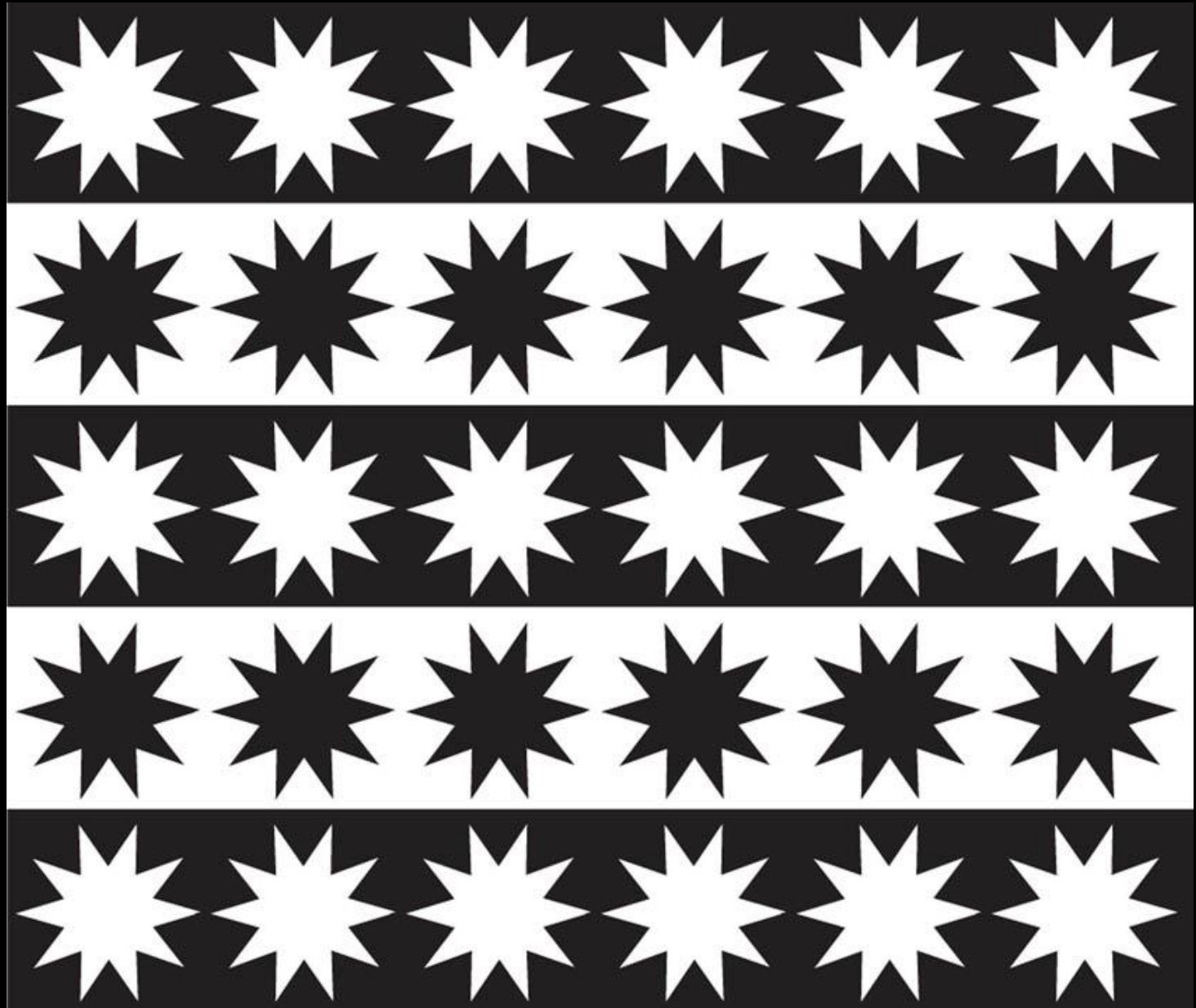
Pattern & Rhythm



(Pattern)



Horizontal alternating pattern



The Blue Room

Suzanne Valadon



(Pattern)
(Motif)



Huqqa base



Pashmina carpet with millefleur pattern

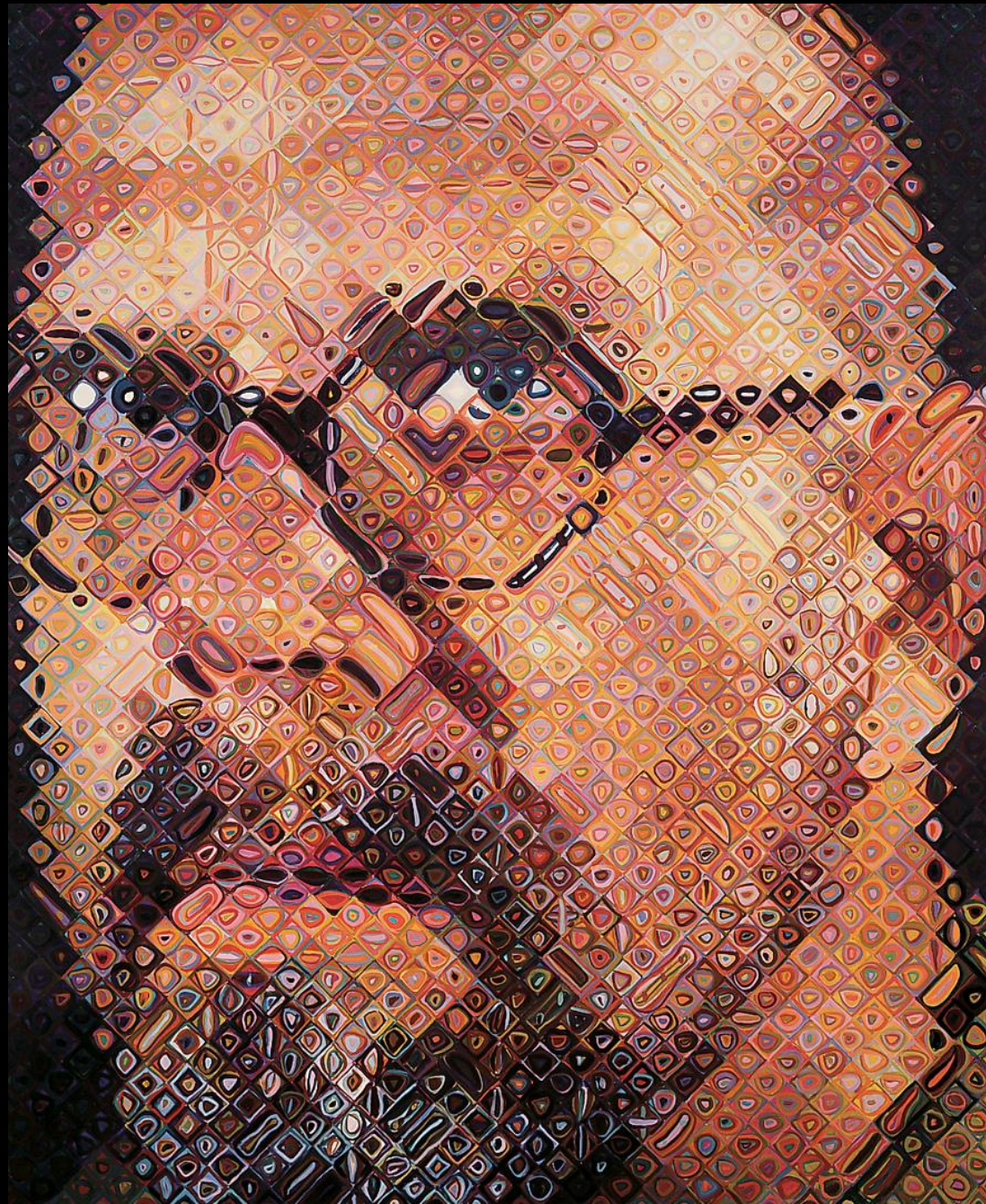


Pashmina carpet with millefleur pattern (detail)



Self Portrait, 1997

Chuck Close



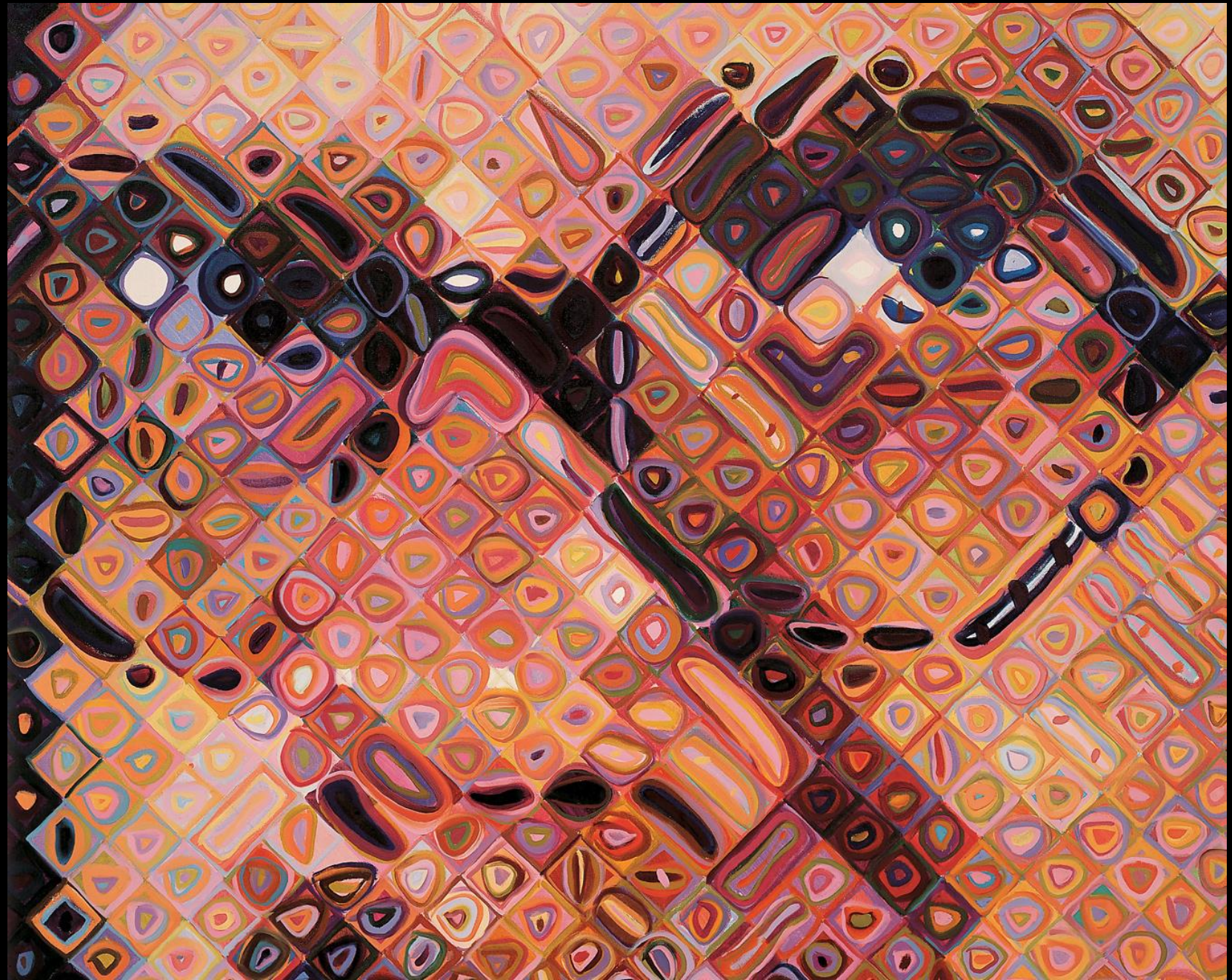
Self Portrait, 1997 (detail)

Chuck Close



Self Portrait, 1997 (detail)

Chuck Close



(Pattern)
(Randomness)

•



(Rhythm)



Hunters in the Snow

Pieter Bruegel



Hunters in the Snow (detail)

Pieter Bruegel



Hunters in the Snow (detail)

Pieter Bruegel



Great Mosque of Cordoba, prayer hall



Bai-ra-Irrai



Bai-ra-Irrai



The Third of May, 1808

Francisco Goya



Plowing in the Nivernais: Dressing of the Vines

Rosa Bonheur



Plowing in the Nivernais: Dressing of the Vines

Rosa Bonheur



This principle of design arises from repetition of a pattern

- a. balance
- b. focal point
- c. unity
- d. rhythm
- e. none of these answers

This principle of design arises from repetition of a pattern

- a. balance
- b. focal point
- c. unity
- d. rhythm
- e. none of these answers

Sometimes artists use this kind of changing pattern to make a work more lively

- a. alternating pattern
- b. focal pattern
- c. interval pattern
- d. repetitive pattern
- e. balanced pattern

Sometimes artists use this kind of changing pattern to make a work more lively

- a. alternating pattern
- b. focal pattern
- c. interval pattern
- d. repetitive pattern
- e. balanced pattern

In Islamic art it is not uncommon to see complex interlaced _____, which are designs repeated as units in a pattern

- a. arabesques
- b. mihrabs
- c. motifs
- d. qiblas
- e. none of these answers

In Islamic art it is not uncommon to see complex interlaced _____, which are designs repeated as units in a pattern

- a. arabesques
- b. mihrabs
- c. motifs
- d. qiblas
- e. none of these answers

Chuck Close's Self Portrait of 1997 is made up of small units that are unrecognizable, or _____.

- a. abstract
- b. representational
- c. stylized
- d. realistic
- e. expressionistic

Chuck Close's Self Portrait of 1997 is made up of small units that are unrecognizable, or _____.

- a. abstract
- b. representational
- c. stylized
- d. realistic
- e. expressionistic

Using automatic reactions to apply art materials in such a way as consciously to deny order can lead to _____ in art.

- a. structure
- b. balance
- c. unity
- d. randomness
- e. proportion

Using automatic reactions to apply art materials in such a way as consciously to deny order can lead to _____ in art.

- a. structure
- b. balance
- c. unity
- d. randomness
- e. proportion

The German-French sculptor Hans Arp worked on creating "_____ " arrangements to communicate the ideas of the Dada movement.

- a. chance
- b. controlled
- c. rigid
- d. solid
- e. none of these

The German-French sculptor Hans Arp worked on creating "_____" arrangements to communicate the ideas of the Dada movement.

- a. chance
- b. controlled
- c. rigid
- d. solid
- e. none of these

When there are at least two points of reference in an artwork, _____ is present.

- a. size
- b. rhythm
- c. proportion
- d. line
- e. focal point

When there are at least two points of reference in an artwork, _____ is present.

- a. size
- b. rhythm
- c. proportion
- d. line
- e. focal point

In this 16th Century work, the Dutch artist Pieter Bruegel uses rhythm to direct the viewer's attention through the work.

- a. Trousse d'un Da
- b. The Third of May 1808
- c. The Blue Room
- d. Hunters in the Snow
- e. Artichoke Halved

In this 16th Century work, the Dutch artist Pieter Bruegel uses rhythm to direct the viewer's attention through the work.

- a. Trousse d'un Da
- b. The Third of May 1808
- c. The Blue Room
- d. Hunters in the Snow
- e. Artichoke Halved

This is a way in which artists divide visual space into different kinds of sections to achieve different rhythmic effects

- a. randomness
- b. unity
- c. contrast
- d. linear perspective rhythm
- e. rhythmic design structure

This is a way in which artists divide visual space into different kinds of sections to achieve different rhythmic effects

- a. randomness
- b. unity
- c. contrast
- d. linear perspective rhythm
- e. rhythmic design structure