

Unity, Variety, and Balance

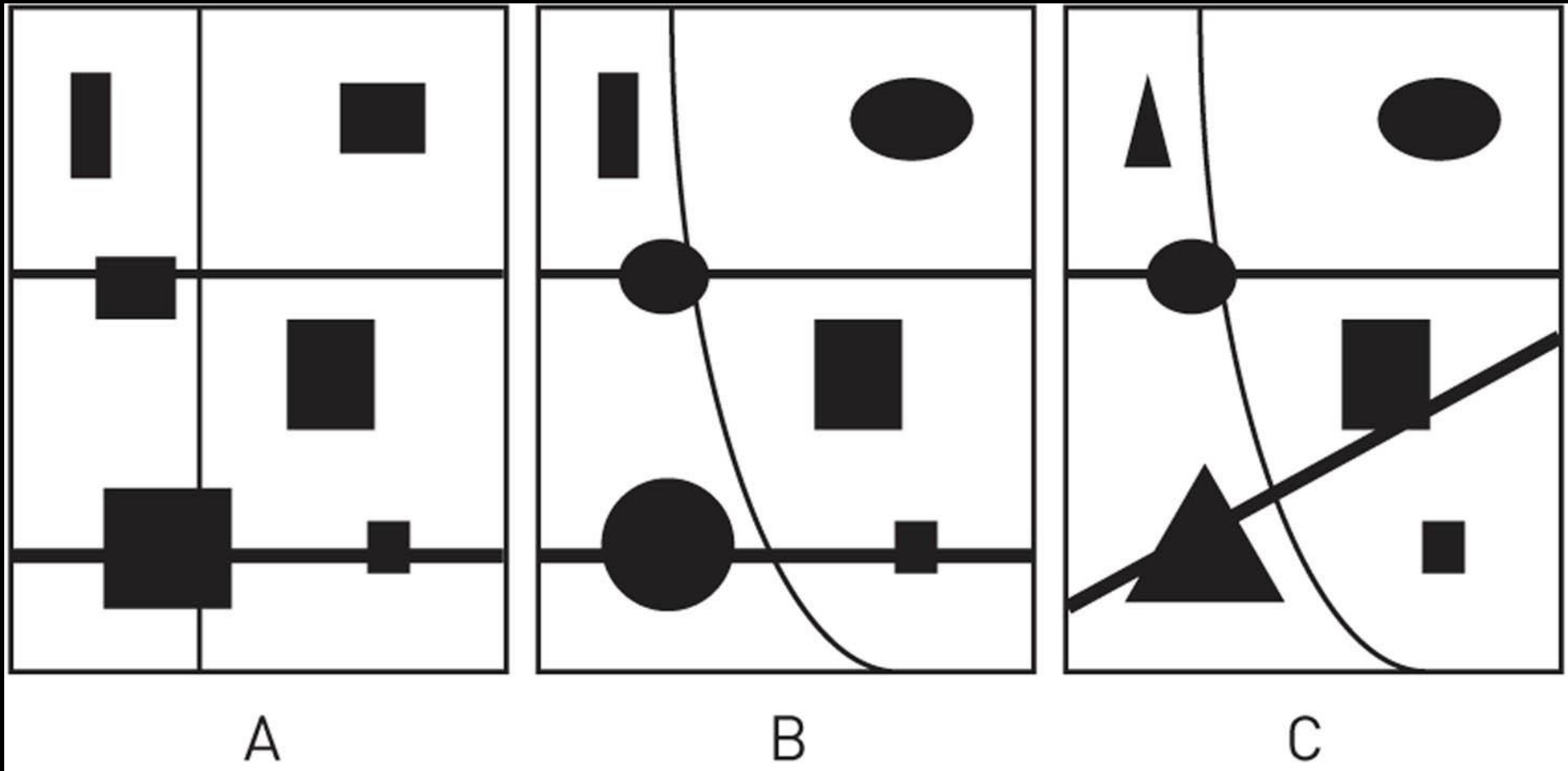
.

Unity



.

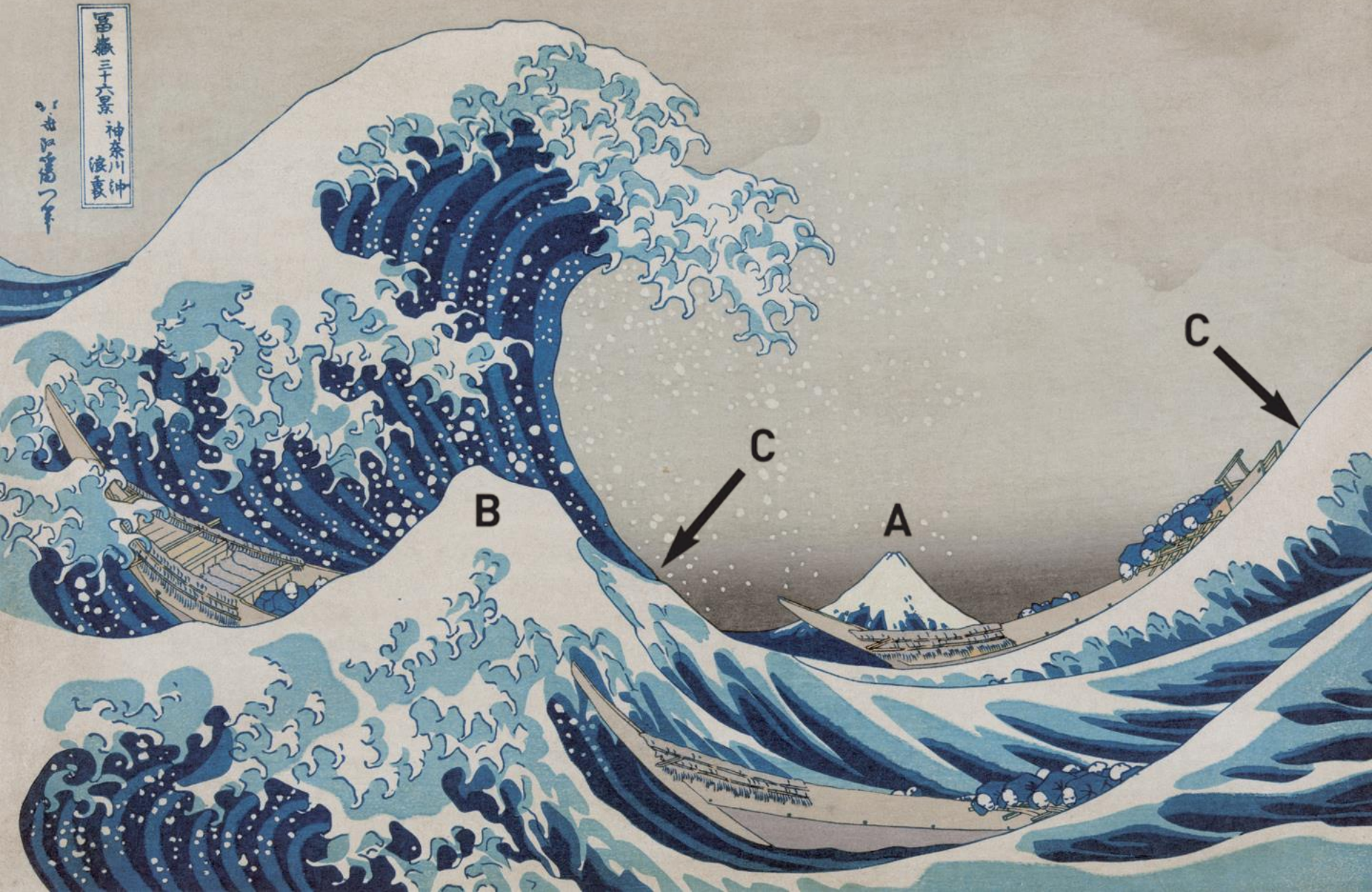
(Compositional Unity)



- A is unified but lacks the visual interest of B
- C is unified but more chaotic than A or B

Great Wave Off Shore at Kanagawa

Hokusai



Great Wave Off Shore at Kanagawa

Hokusai



富嶽三十六景 神奈川沖
波裏

大正十一年







The Flagellation

Piero della Francesca



The Dove

Romare Bearden



(Conceptual Unity)

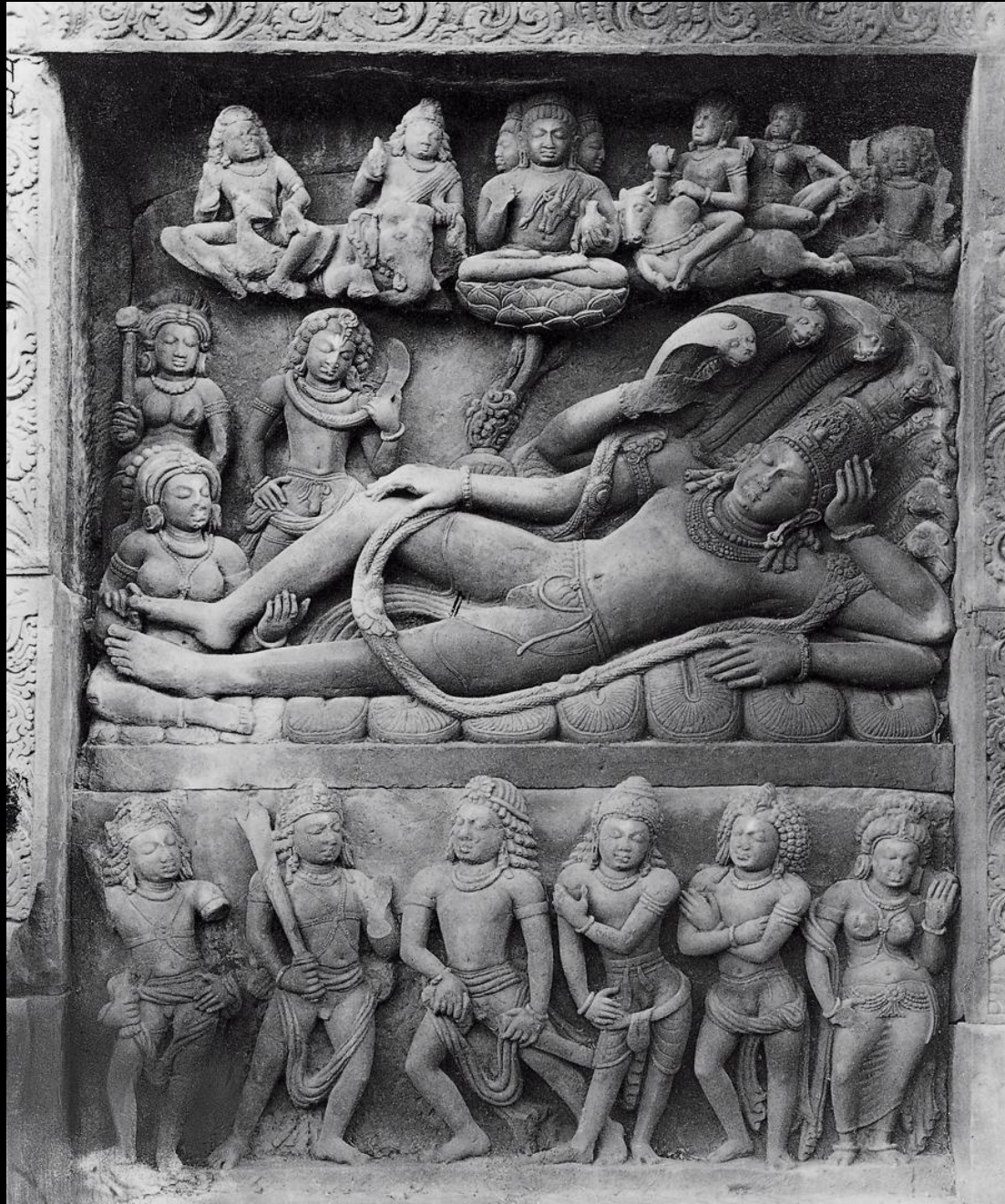
Untitled (The Hotel Eden)

Joseph Cornell



(Gestalt Unity)

Vishnu Dreaming the Universe



Variety



.





Album Quilt



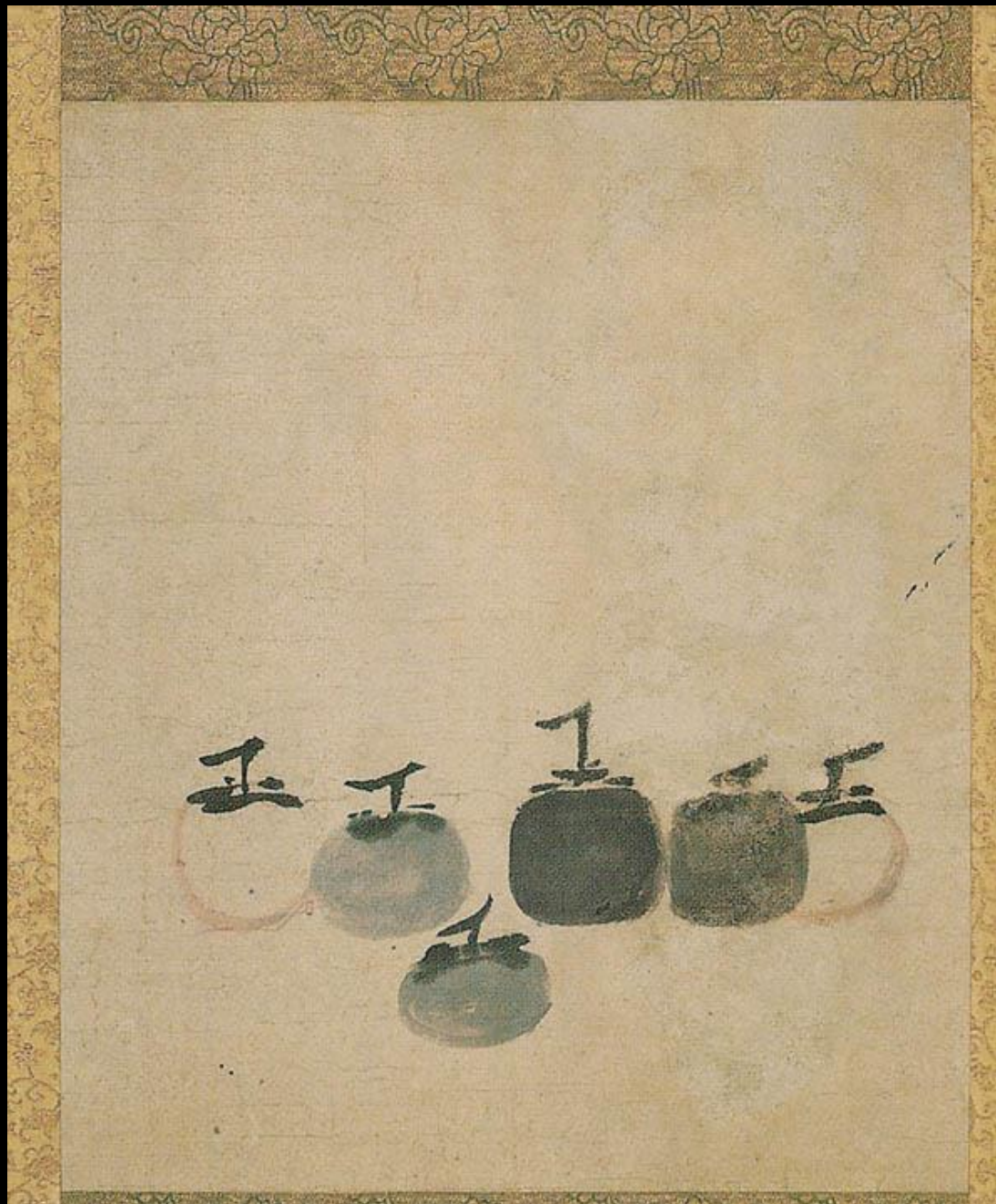
Balance



.

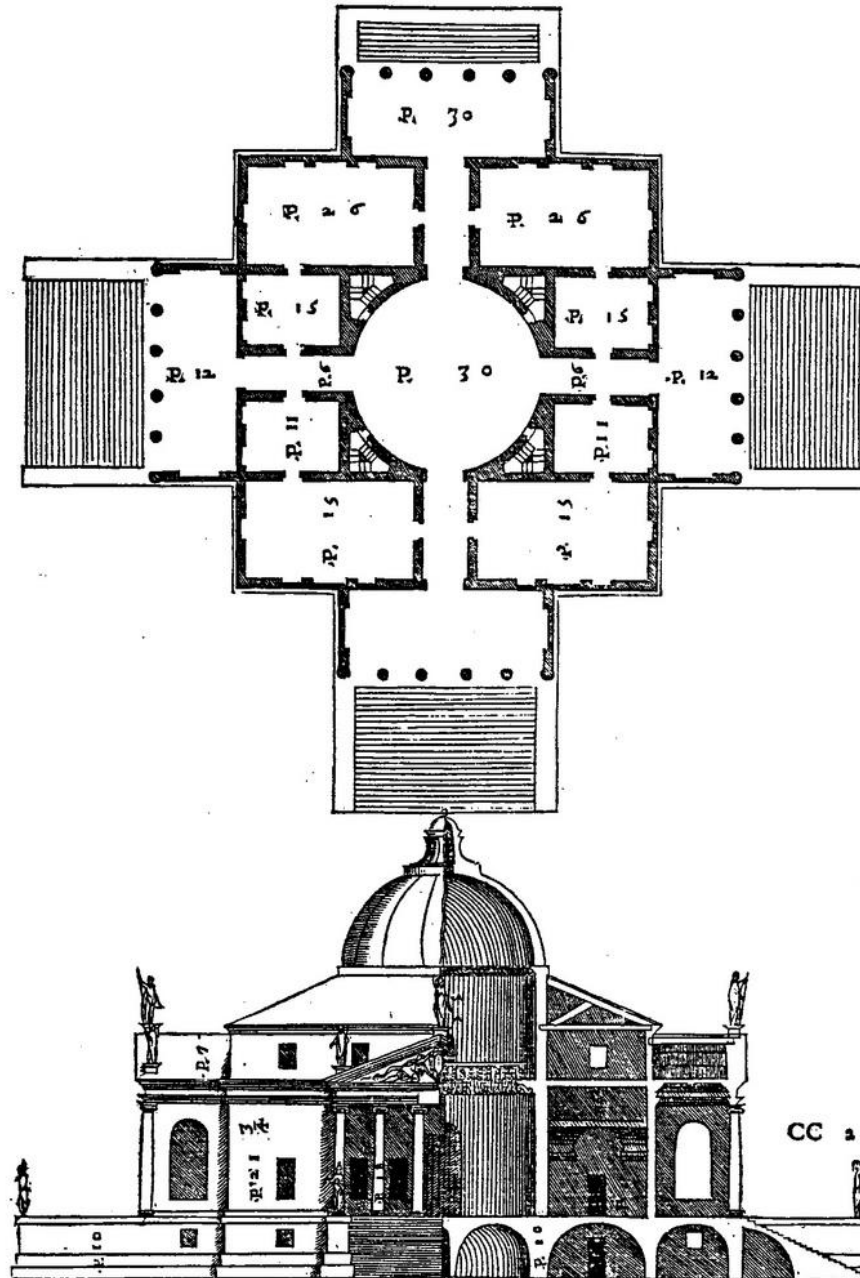
Ritual Container from Gui, China





Radial Balance





An artist creates compositional unity by

- a. organizing all the visual elements of the work
- b. creating more variety in the piece
- c. intensifying parts of the composition
- d. scattering the elements apart in the work
- e. meditating on the work

An artist creates compositional unity by

- a. organizing all the visual elements of the work
- b. creating more variety in the piece
- c. intensifying parts of the composition
- d. scattering the elements apart in the work
- e. meditating on the work

In his work *The Flagellation*, Piero della Francesca communicates a mood of detachment and contemplation by using this principle of design

- a. Variety
- b. Balance
- c. Scale
- d. Unity
- e. Emphasis

In his work *The Flagellation*, Piero della Francesca communicates a mood of detachment and contemplation by using this principle of design

- a. Variety
- b. Balance
- c. Scale
- d. Unity
- e. Emphasis

An interior designer can balance curved and straight lines to _____ each other.

- a. complement
- b. negate
- c. contradict
- d. invigorate
- e. define

An interior designer can balance curved and straight lines to _____ each other.

- a. complement
- b. negate
- c. contradict
- d. invigorate
- e. define

Artists face a communication challenge: to find a _____ within the chaos of nature and to select and organize materials into a harmonious composition.

- a. truth
- b. variety
- c. structure
- d. void
- e. none of these answers

Artists face a communication challenge: to find a _____ within the chaos of nature and to select and organize materials into a harmonious composition.

- a. truth
- b. variety
- c. structure
- d. void
- e. none of these answers

A work can still display unity, even if none of the visual elements has anything in common, if

- a. there is an extreme amount of variety
- b. conceptual unity is used
- c. all the visual parts are balanced
- d. there is a focal point
- e. only two colors are present

A work can still display unity, even if none of the visual elements has anything in common, if

- a. there is an extreme amount of variety
- b. conceptual unity is used
- c. all the visual parts are balanced
- d. there is a focal point
- e. only two colors are present

Gestalt unity is a term that is derived from this language:

- a. Turkish
- b. German
- c. French
- d. Greek

Gestalt unity is a term that is derived from this language:

- a. Turkish
- b. German
- c. French
- d. Greek

A good example of variety in a work would be

_____ .

- a. the use of pattern
- b. repetition
- c. one color used in a work
- d. one texture used in a work
- e. different shapes and colors

A good example of variety in a work would be

_____ .

- a. the use of pattern
- b. repetition
- c. one color used in a work
- d. one texture used in a work
- e. different shapes and colors

Hokusai's print of The Great Wave Off Shore at Kanagawa uses compositional unity in which of these ways?

- a. It makes the wave crests like the snow on Mount Fuji
- b. It repeats the shape of Mount Fuji throughout the work
- c. It repeats textures throughout the work
- d. It places the boats in proximity to one another
- e. All of these answers

When Tibetan Buddhist monks create a sand mandala, they are creating a composition that has this kind of balance:

- a. radial
- b. symmetrical
- c. asymmetrical
- d. pictorial
- e. actual

When Tibetan Buddhist monks create a sand mandala, they are creating a composition that has this kind of balance:

- a. radial
- b. symmetrical
- c. asymmetrical
- d. pictorial
- e. actual

The focal point of Rauschenberg's sculpture
Monogram is _____

- a. a stuffed parrot
- b. Vishnu
- c. a t'ao t'ieh
- d. a stuffed goat
- e. a houseboat

The focal point of Rauschenberg's sculpture
Monogram is _____

- a. a stuffed parrot
- b. Vishnu
- c. a t'ao t'ieh
- d. a stuffed goat
- e. a houseboat