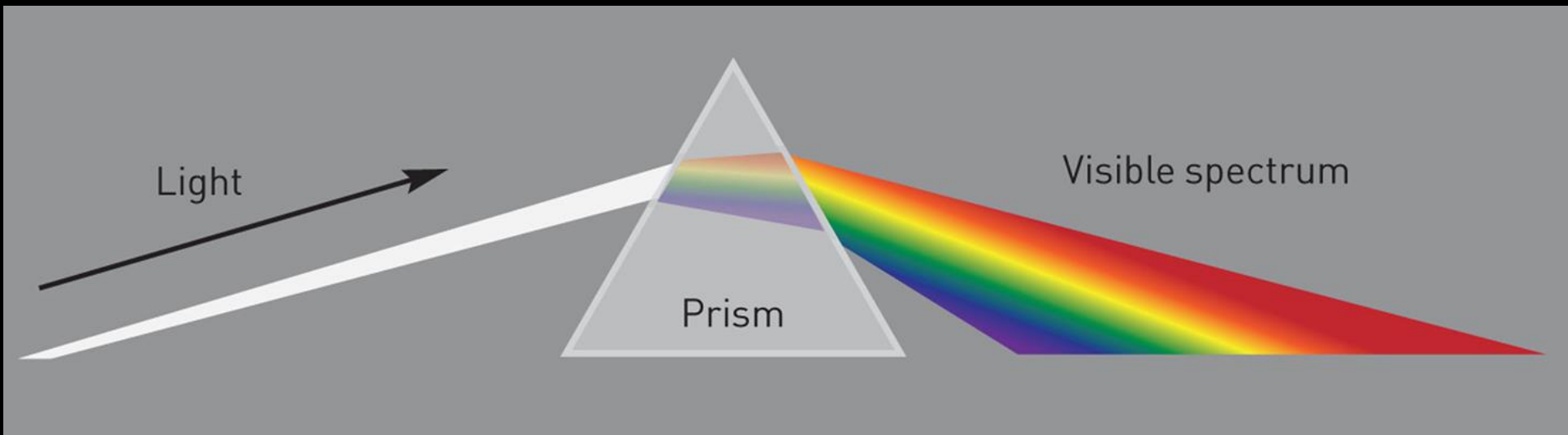


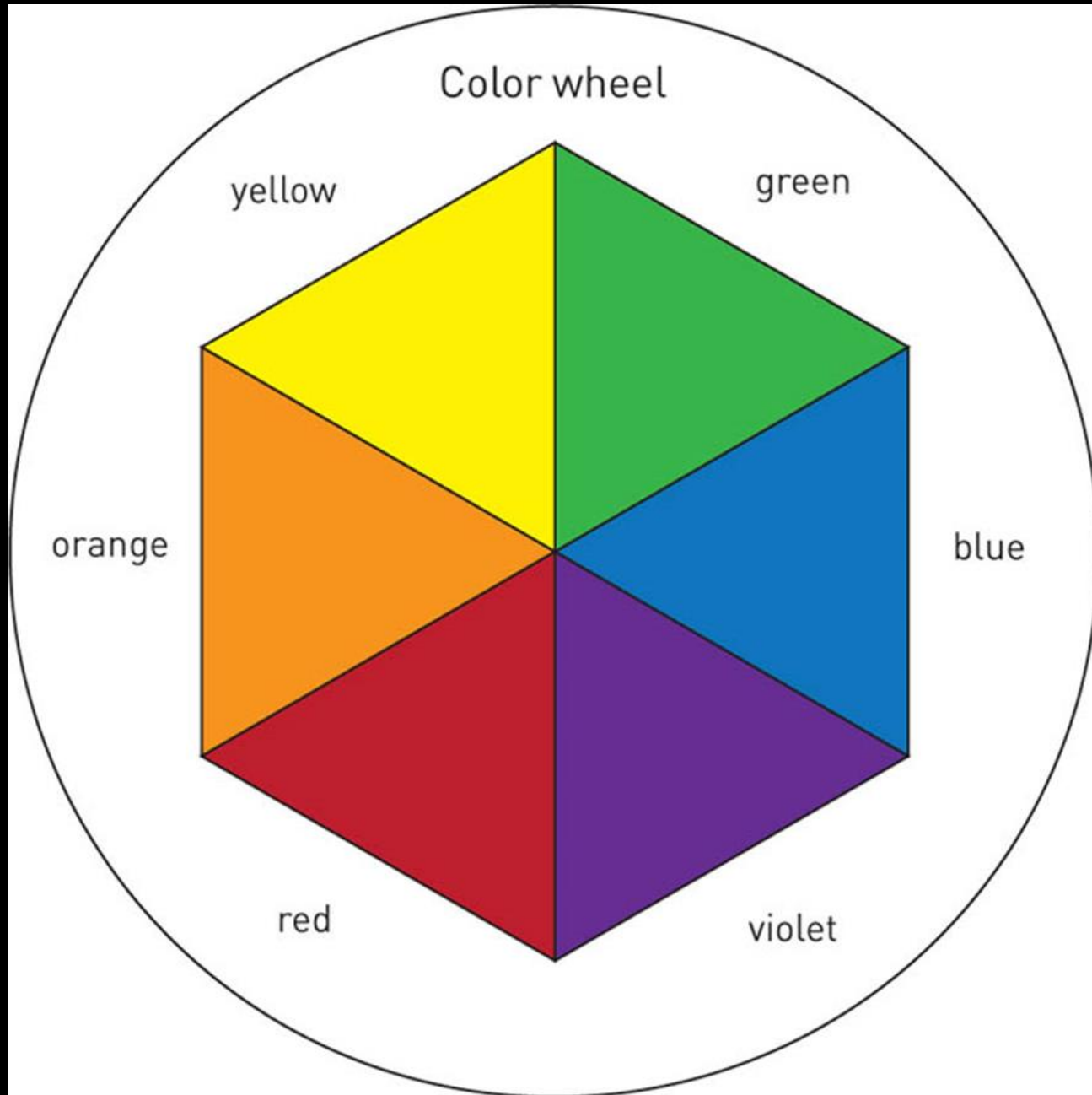
# Color



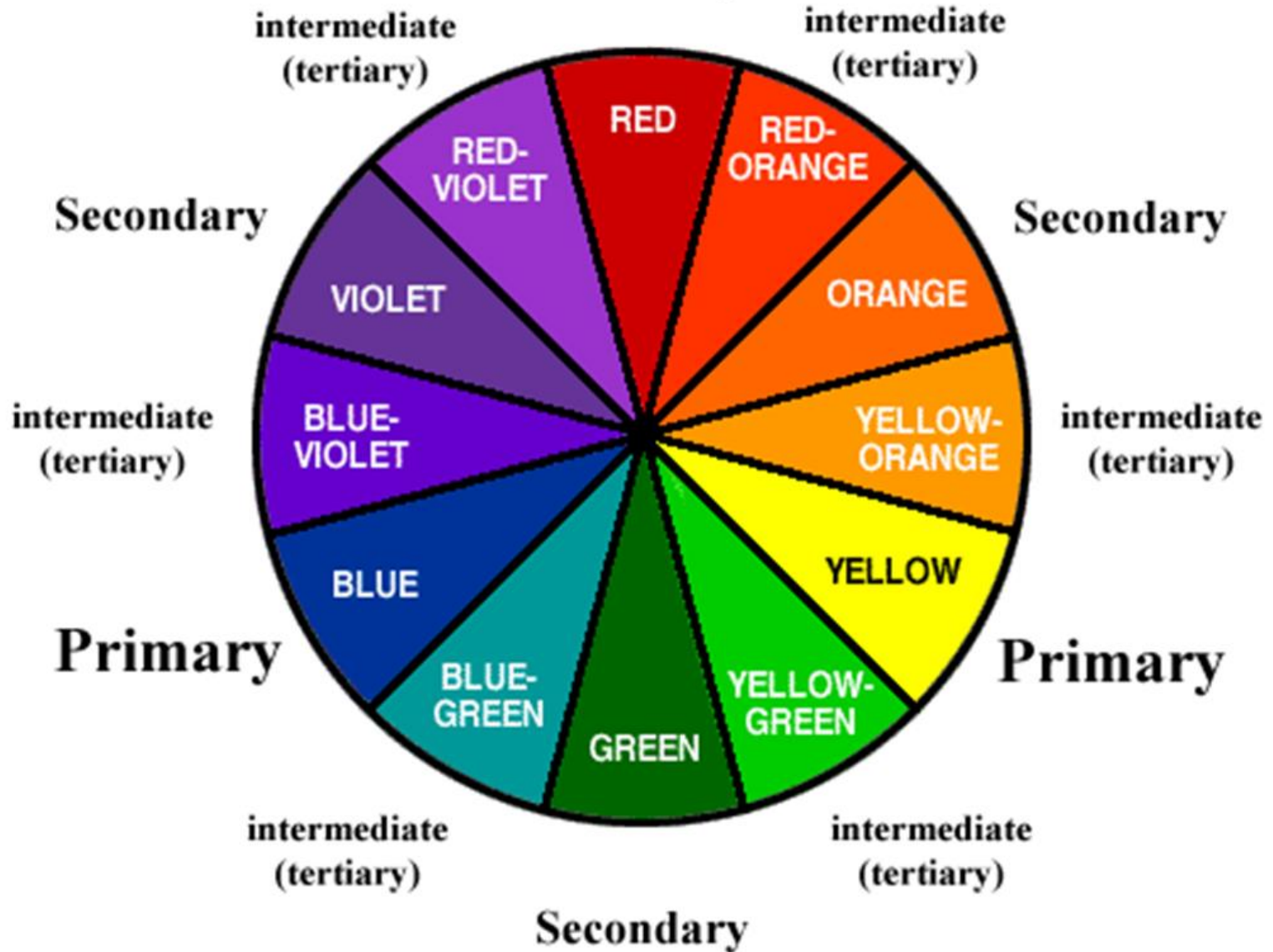
White light can be separated into the visible spectrum using a prism



# Traditional color wheel (red, yellow, blue primaries)

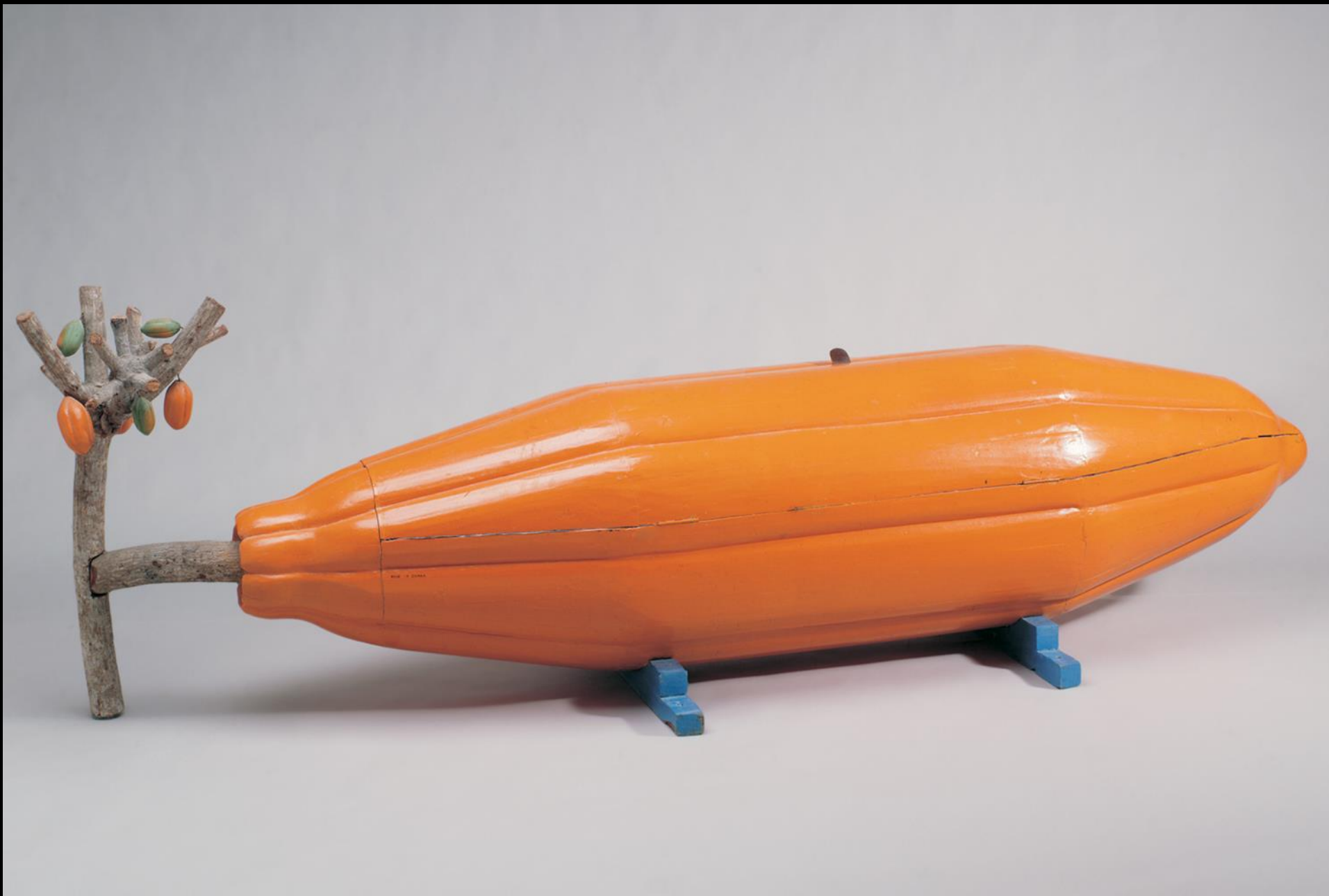


# Primary

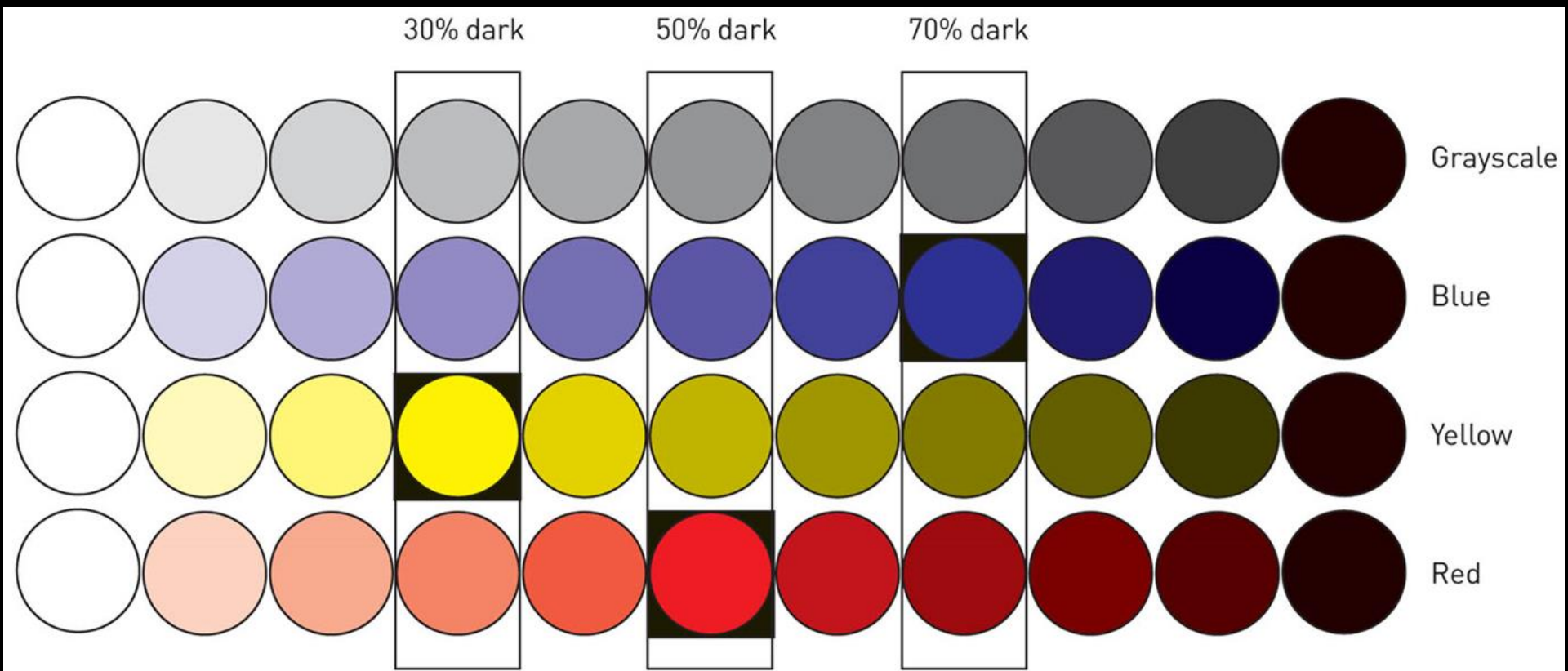


# Coffin in the Shape of a Cocoa Pod

Kane Kwei

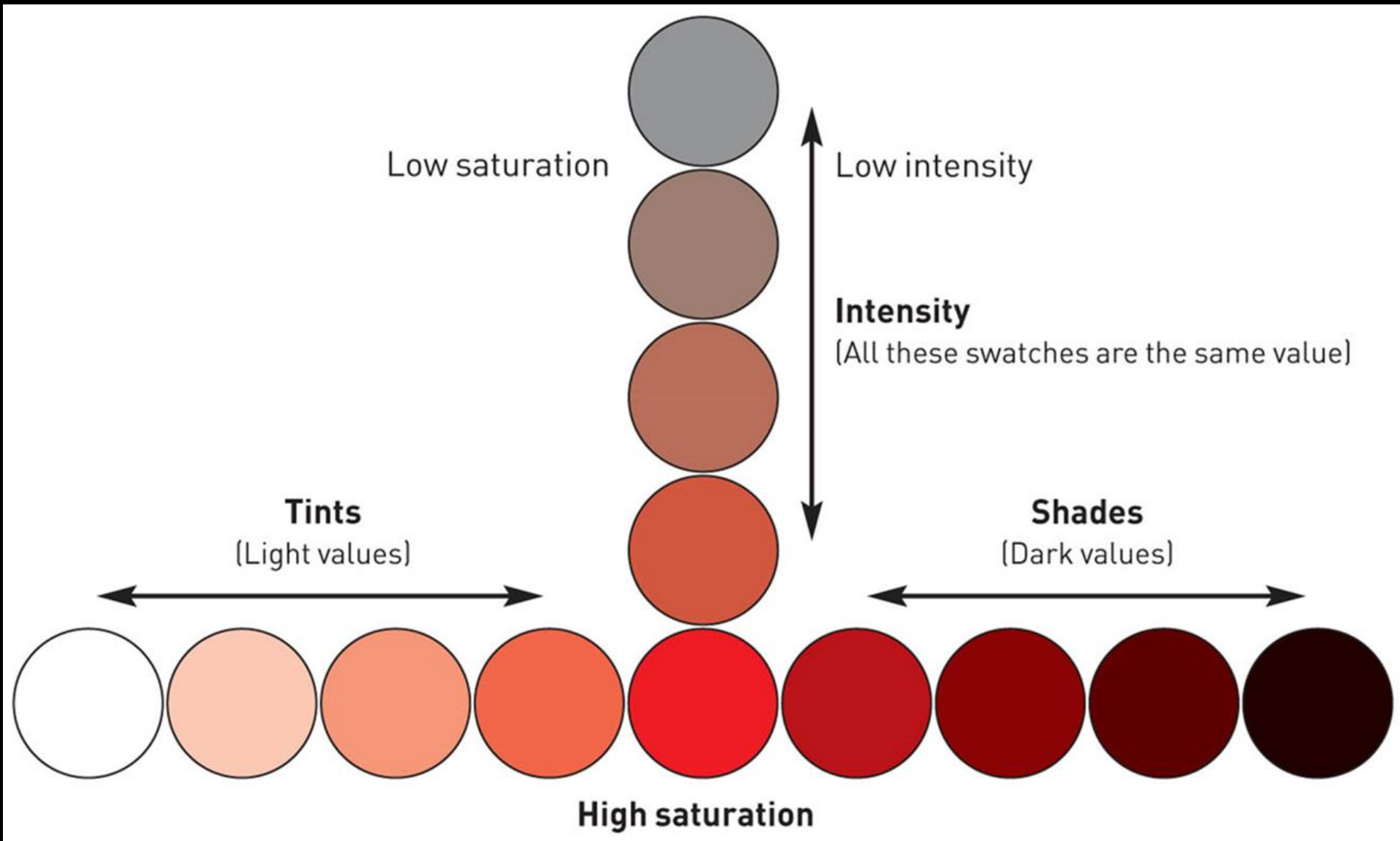


# Color-value relationships





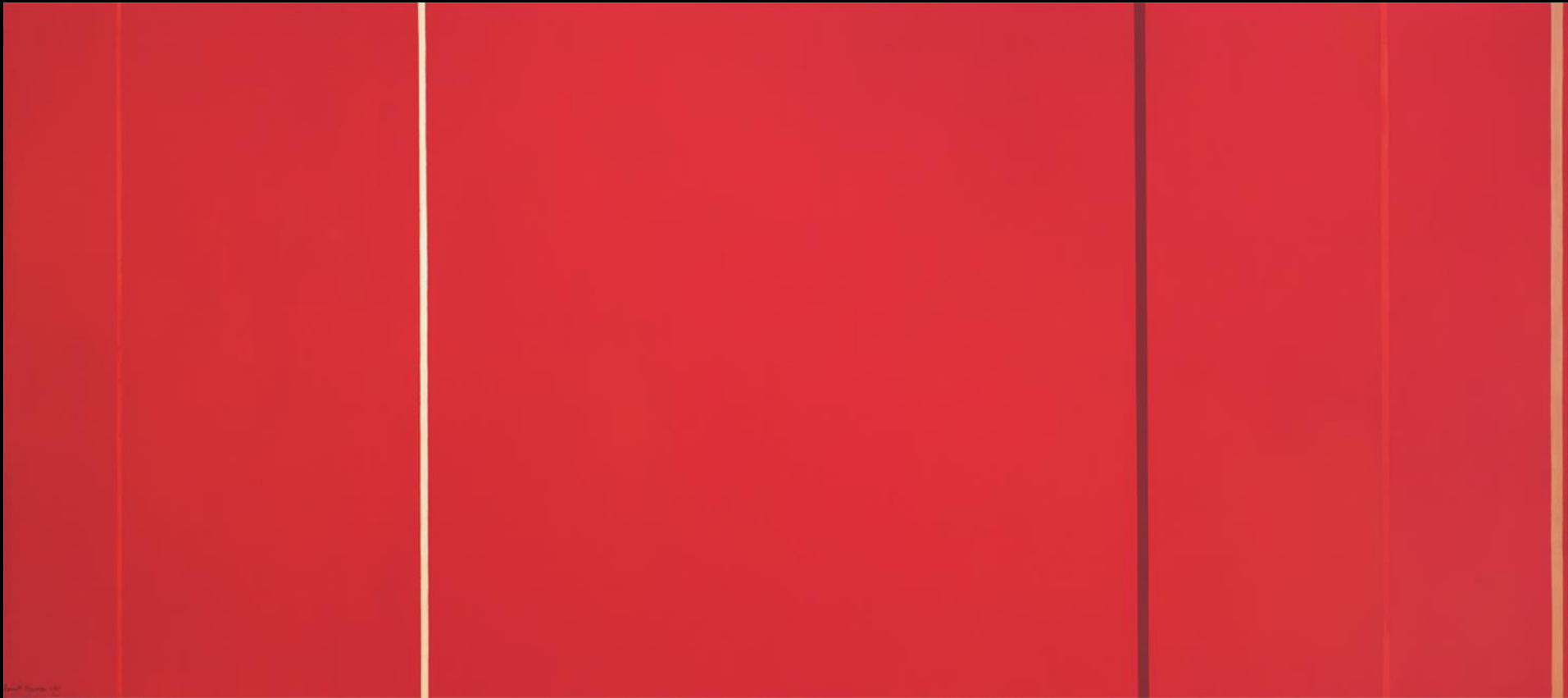
# High and low saturation in a red hue





Vir Heroicus Sublimis

Barnett Newman



Barnett Newman 1950

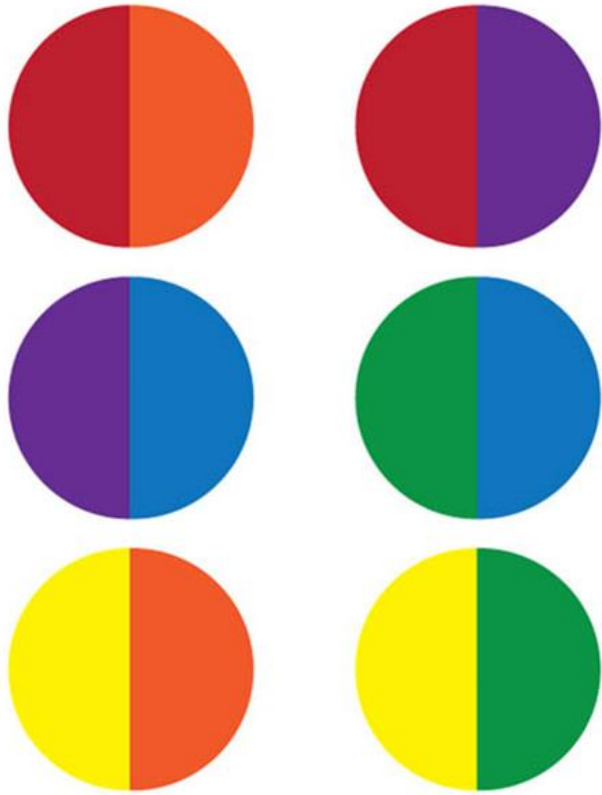
The Turning Road, L'Estaque

Andre Derain

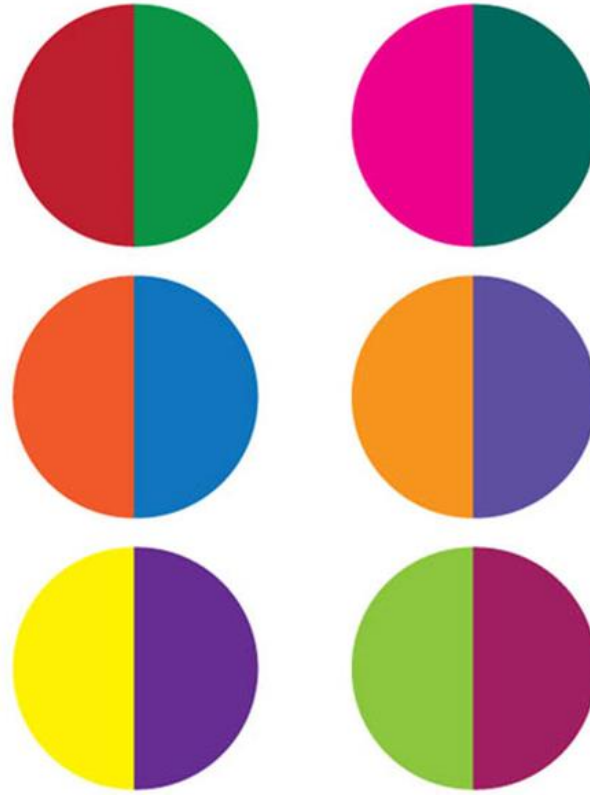


# Color combinations, color complements, and vibrating boundaries

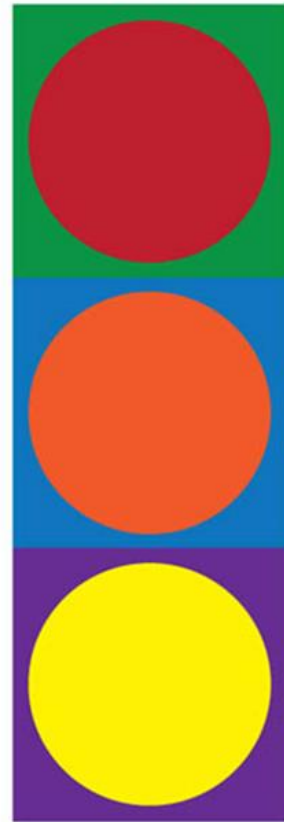
Primary/secondary  
analogous combinations



Primary/secondary and  
tertiary complements



Vibrating  
boundaries



un moment  
si libres.

Ne devrait-on  
pas faire ac.  
complir un  
grand voyage  
en avion aux  
jeunes gens  
ayant terminé  
leurs études.



# Twilight in the Wilderness

Frederic Edwin Church



# The Boating Party

Mary Cassatt



# Interior with Figures

Howard Hodgkin

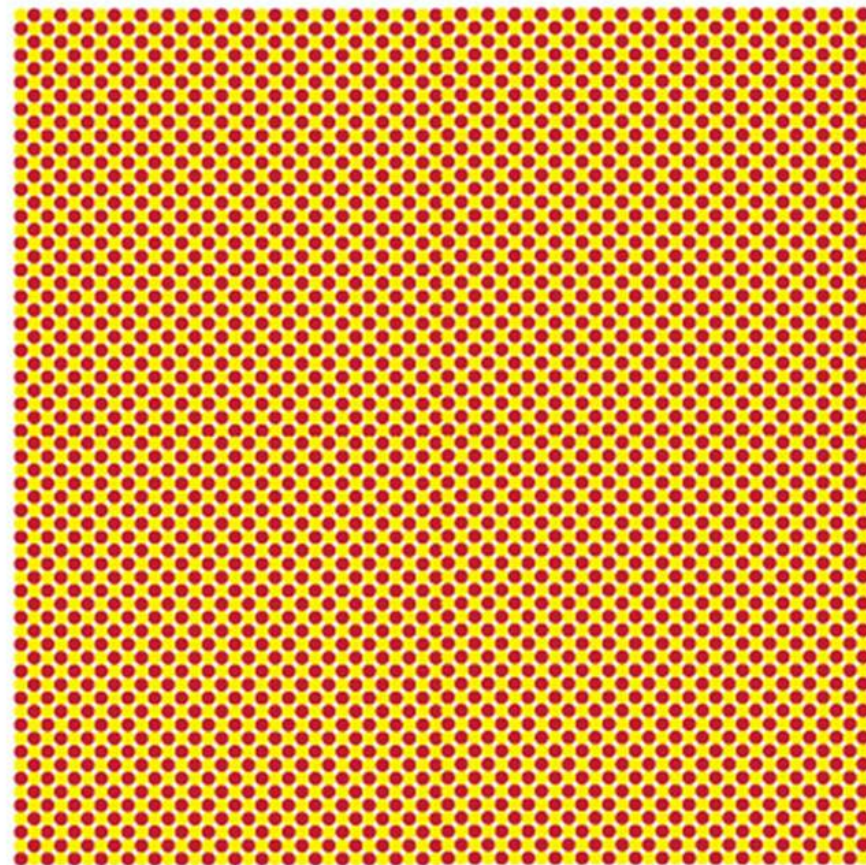
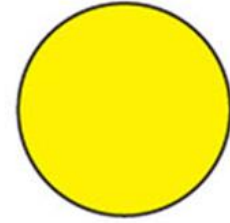
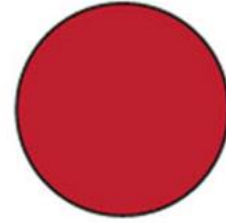
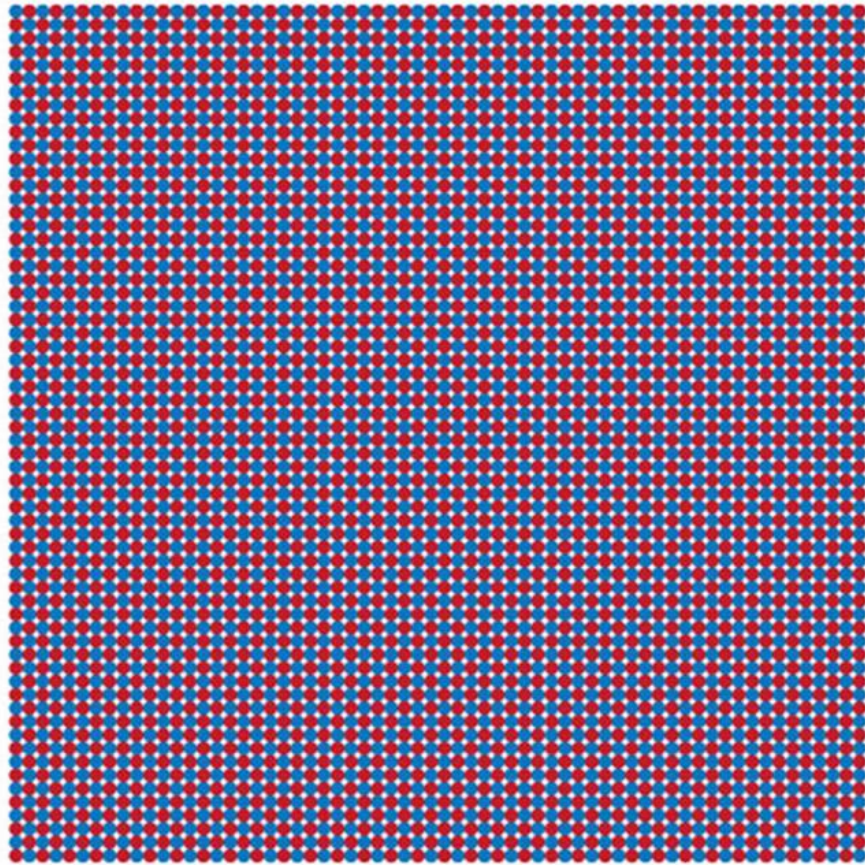


Mosque lamp from the Dome of the Rock in Jerusalem





# Optical color mixing effect



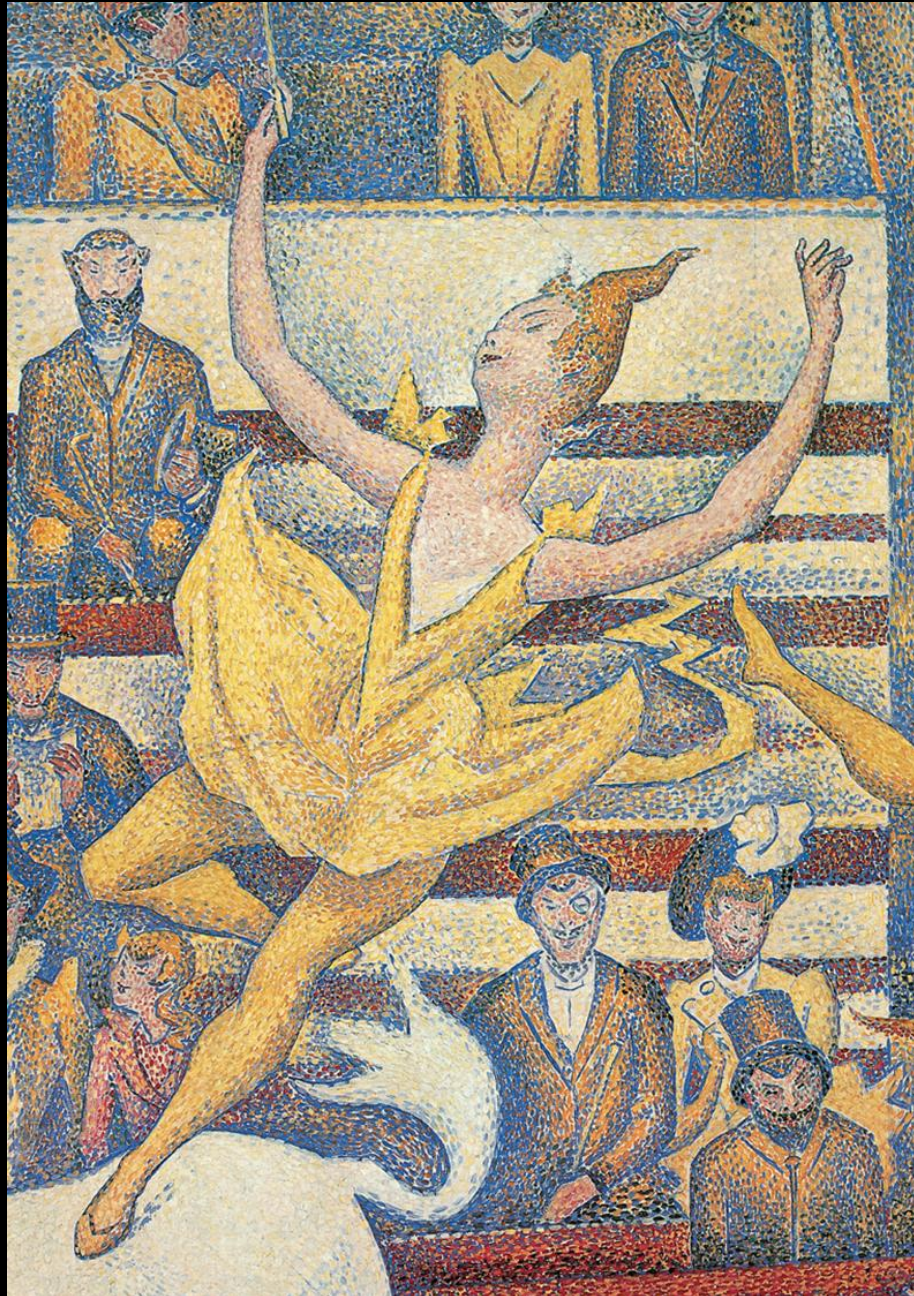
# The Circus

Georges Seurat

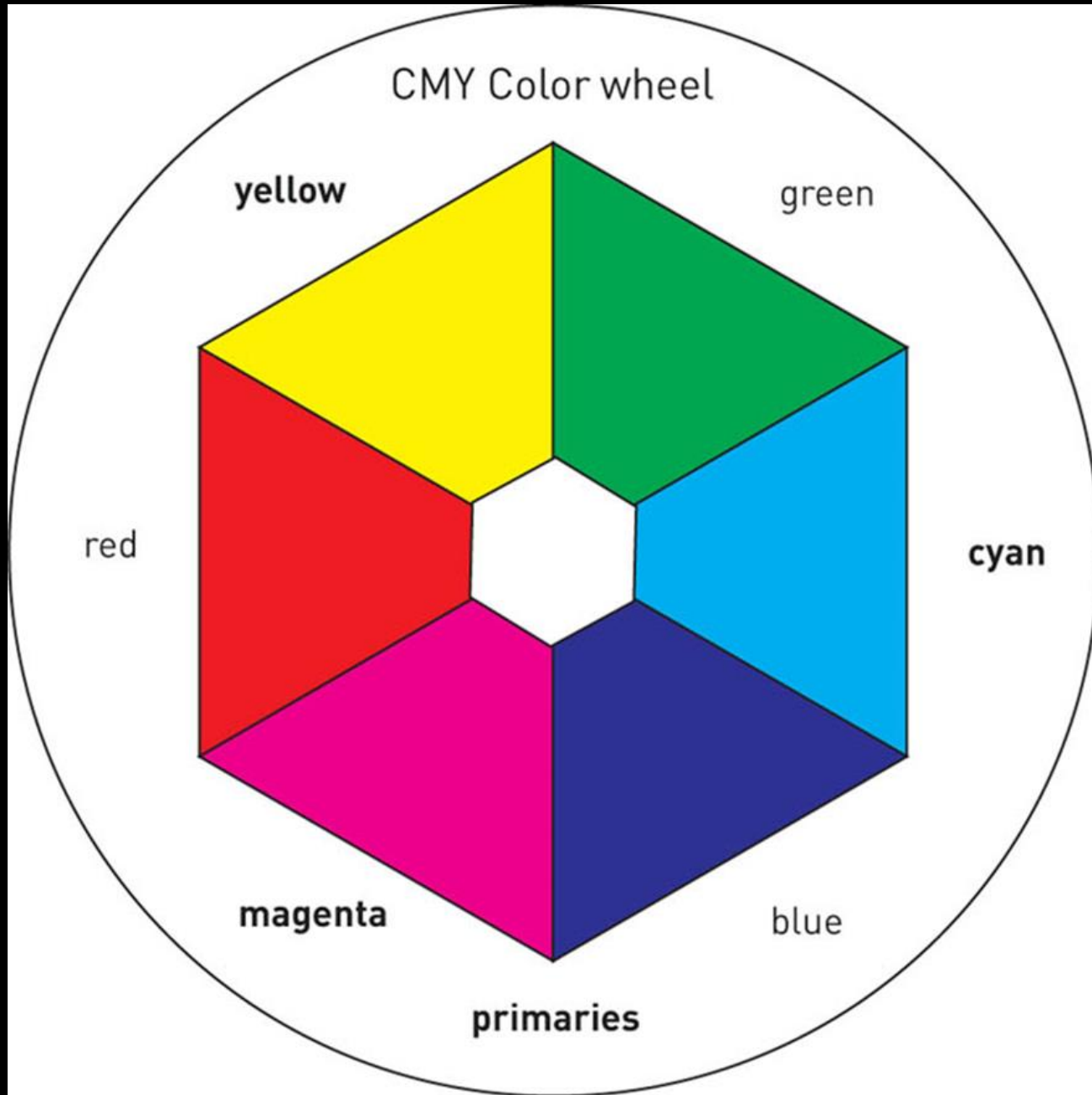


# The Circus

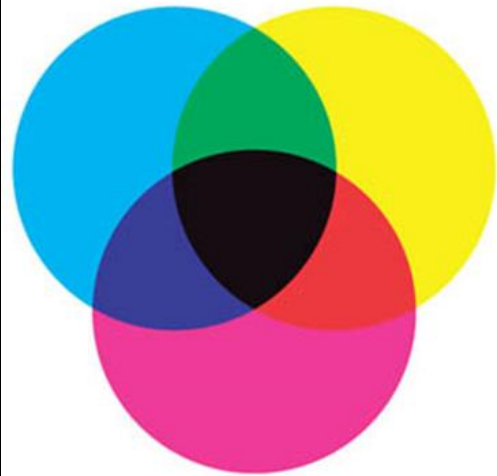
Georges Seurat



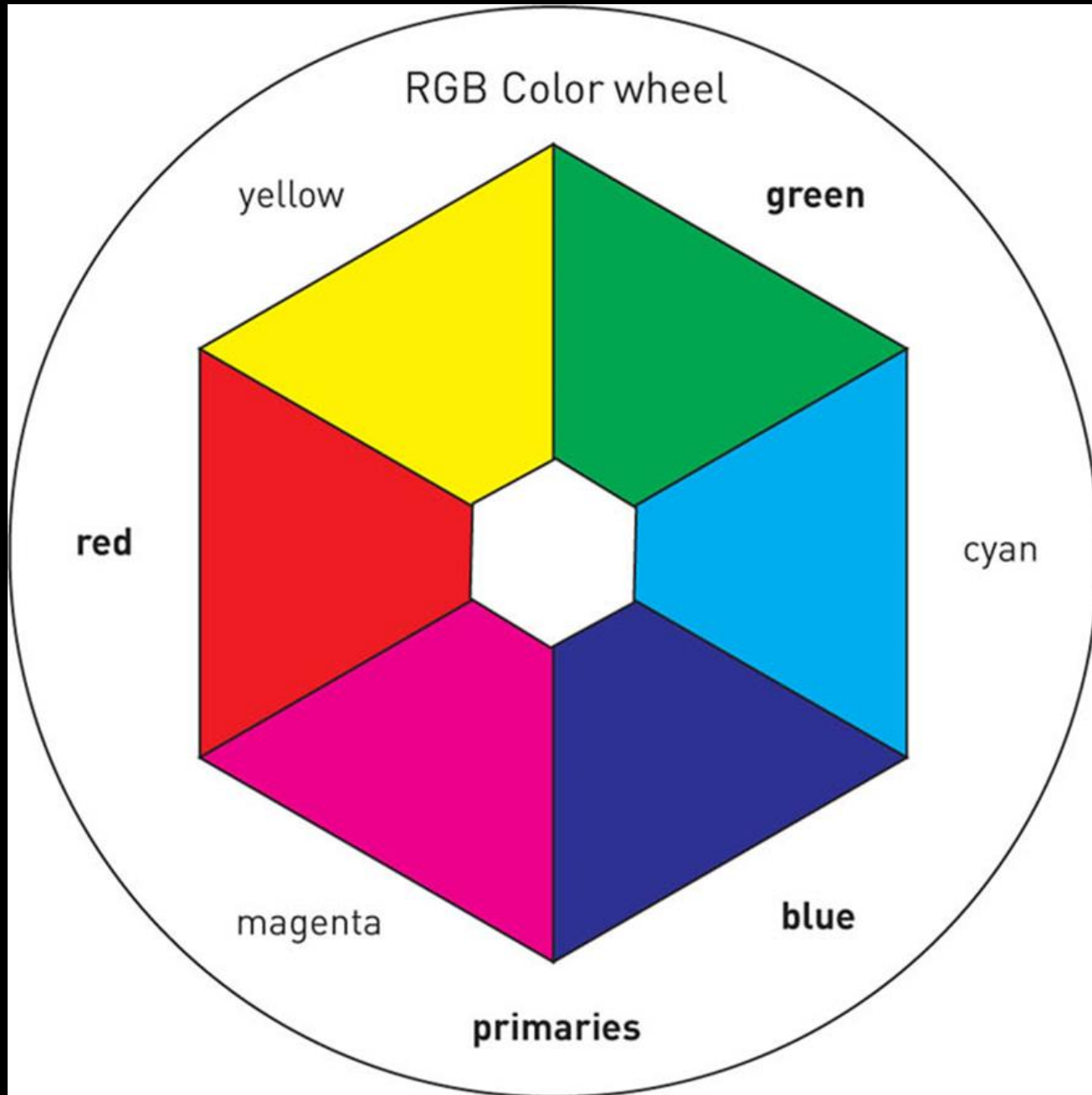
# Color wheel for commercial printing inks



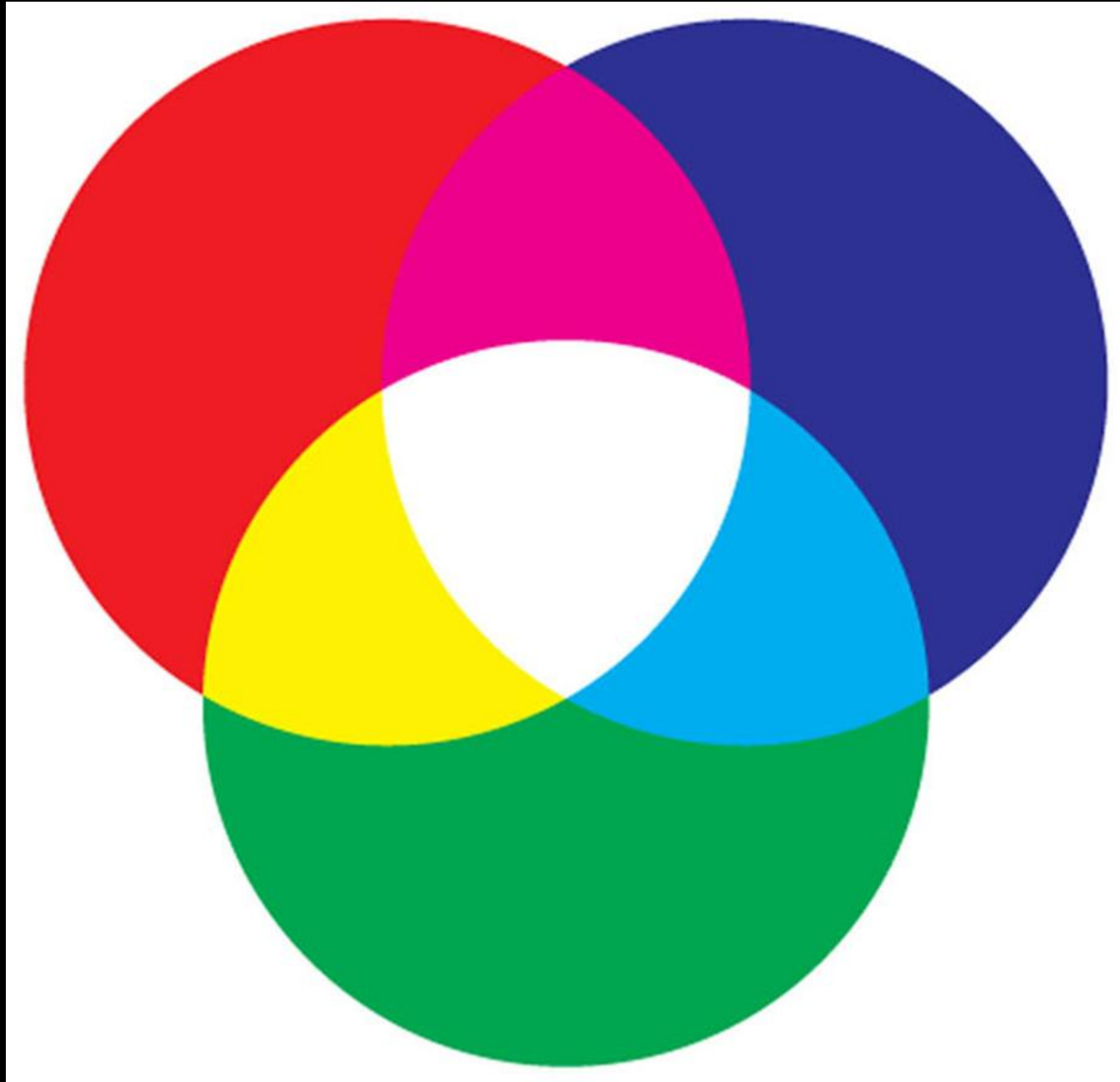
# Subtractive color mixtures



# Color wheel for light using red, green and blue primaries



Additive color mixtures using RGB primaries







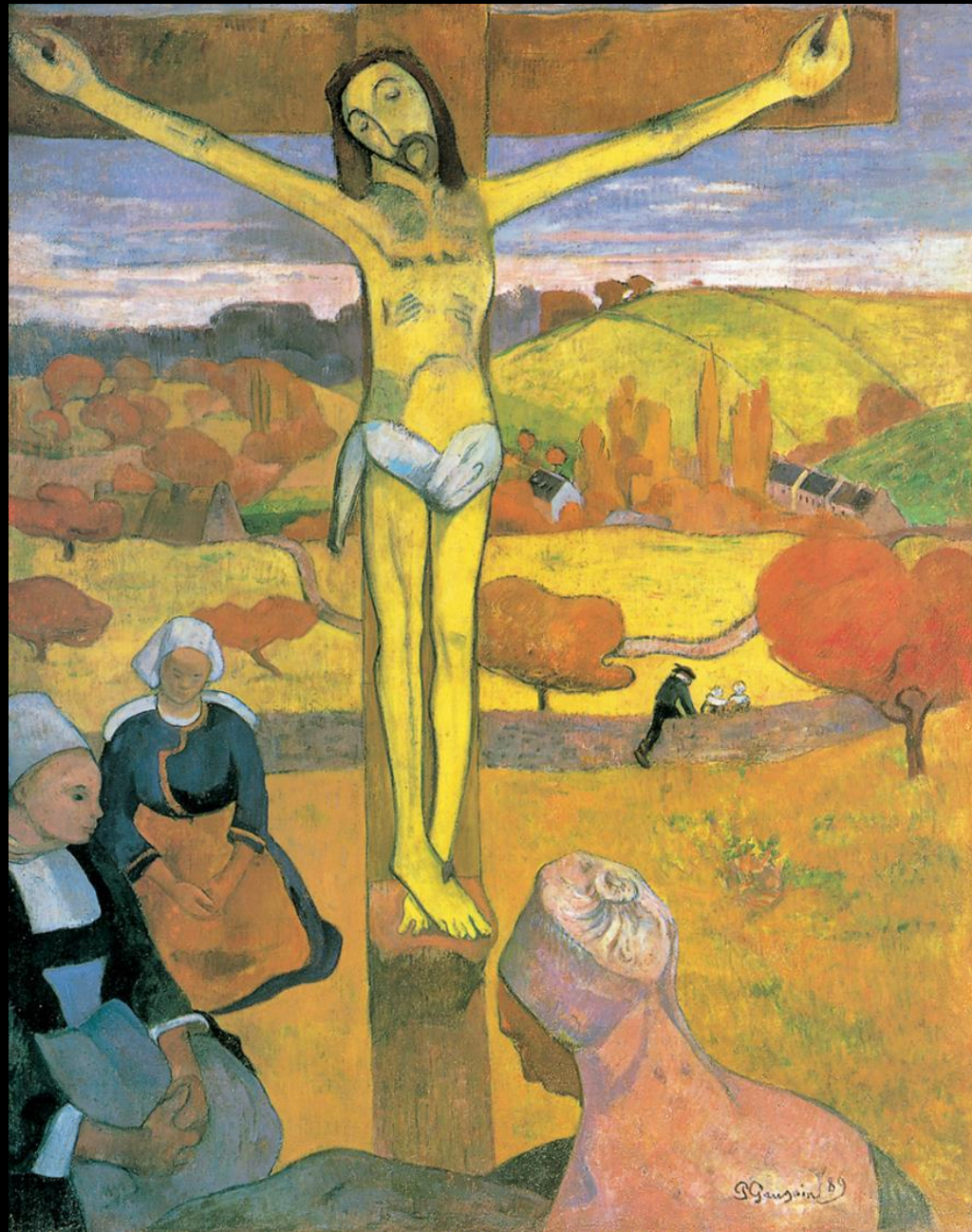
# The Night Cafe

Vincent van Gogh



# The Yellow Christ

Paul Gauguin



- 1. Reflected light excites \_\_\_\_\_ that line the back of our eyes, and their signals are reprocessed and interpreted as color in our brains.
- a. pupils
- b. irises
- c. nerve cells
- d. eyebrows
- e. eyelids

- 1. Reflected light excites \_\_\_\_\_ that line the back of our eyes, and their signals are reprocessed and interpreted as color in our brains.
- a. pupils
- b. irises
- c. nerve cells
- d. eyebrows
- e. eyelids

- 2. Secondary colors can be created from a mixture of \_\_\_\_\_.
- a. three primary colors
- b. a primary and a tertiary color
- c. two tertiary colors
- d. two primary colors
- e. none of these

- 2. Secondary colors can be created from a mixture of \_\_\_\_\_.
- a. three primary colors
- b. a primary and a tertiary color
- c. two tertiary colors
- d. two primary colors
- e. none of these

- 3. A color that is lighter than its basic hue is called a \_\_\_\_\_ .
- a. tint
- b. shade
- c. monochrome
- d. neutral
- e. hue

- 3. A color that is lighter than its basic hue is called a \_\_\_\_\_ .
- a. tint
- b. shade
- c. monochrome
- d. neutral
- e. hue



- 4. A color that is almost gray has a low \_\_\_\_\_ .
- a. saturation
- b. value
- c. aura
- d. pigment
- e. hue

• 4. A color that is almost gray has a low

\_\_\_\_\_ .

- a. saturation
- b. value
- c. aura
- d. pigment
- e. hue

- 5. This is a kind of color "map" that allows an artist to assess quickly the attributes of colors as they relate to each other.
- a. Color scheme
- b. Complementary color
- c. Analogous color
- d. Color wheel
- e. Grayscale

- 5. This is a kind of color "map" that allows an artist to assess quickly the attributes of colors as they relate to each other.
- a. Color scheme
- b. Complementary color
- c. Analogous color
- d. Color wheel
- e. Grayscale

- 6. Matisse was interested in using vibrant colors to \_\_\_\_\_ .
- a. evoke an emotional response
- b. affect the viewer's perception
- c. create an optical illusion
- d. imply objectivity to the scene
- e. attract the attention of children

- 6. Matisse was interested in using vibrant colors to \_\_\_\_\_ .
- a. evoke an emotional response
- b. affect the viewer's perception
- c. create an optical illusion
- d. imply objectivity to the scene
- e. attract the attention of children

- 7. By using this kind of color combination, artists avoid jarring, contrasting color and mood.
- a. Complementary
- b. Analogous
- c. Atmospheric
- d. Tints
- e. Shades

- 7. By using this kind of color combination, artists avoid jarring, contrasting color and mood.
- a. Complementary
- b. Analogous
- c. Atmospheric
- d. Tints
- e. Shades



- 8. This color with a cool temperature is often used to describe a depressed psychological state of mind.
- a. Blue
- b. Orange
- c. Purple
- d. Red
- e. Plaid

- 8. This color with a cool temperature is often used to describe a depressed psychological state of mind.
- a. Blue
- b. Orange
- c. Purple
- d. Red
- e. Plaid

- 9. Color mixtures using light, like those in digital displays, are called \_\_\_\_\_ color mixtures.
- a. subtractive
- b. monochromatic
- c. optical
- d. isometric
- e. additive

- 9. Color mixtures using light, like those in digital displays, are called \_\_\_\_\_ color mixtures.
- a. subtractive
- b. monochromatic
- c. optical
- d. isometric
- e. additive

- 10. When Paul Gauguin chose yellow for his work *Yellow Christ*, he chose the color for its \_\_\_\_\_ qualities.
- a. design
- b. technical
- c. neutral
- d. heroic
- e. expressive

- 10. When Paul Gauguin chose yellow for his work *Yellow Christ*, he chose the color for its \_\_\_\_\_ qualities.
- a. design
- b. technical
- c. neutral
- d. heroic
- e. expressive

Template

Forget you ever saw this.

