

LINE, SHAPE, & CONTRAST

Line



Nazca Lines (aka "Spider")

Nazca, Peru



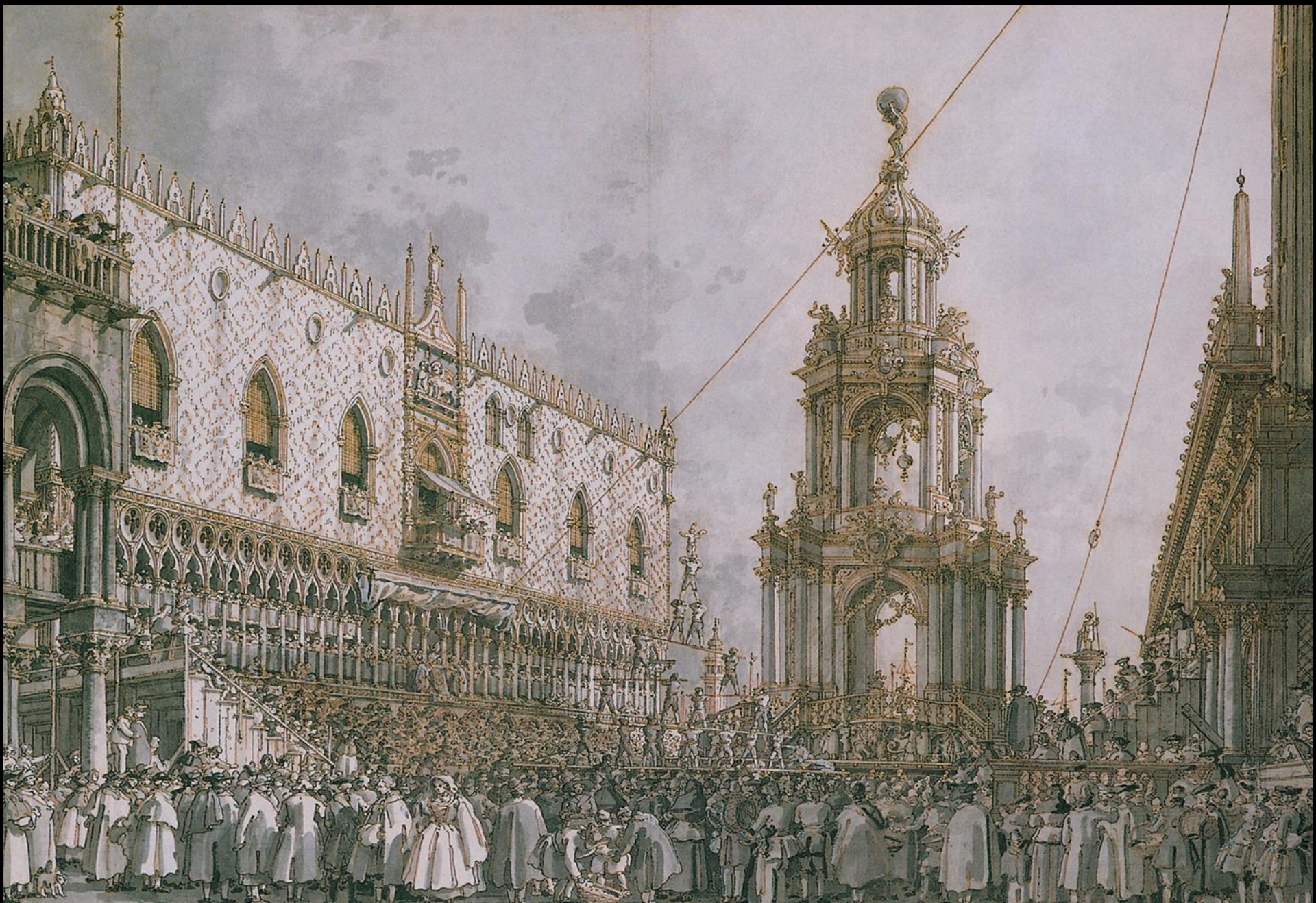
Ducal Palace and Piazzetta

Venice, Italy

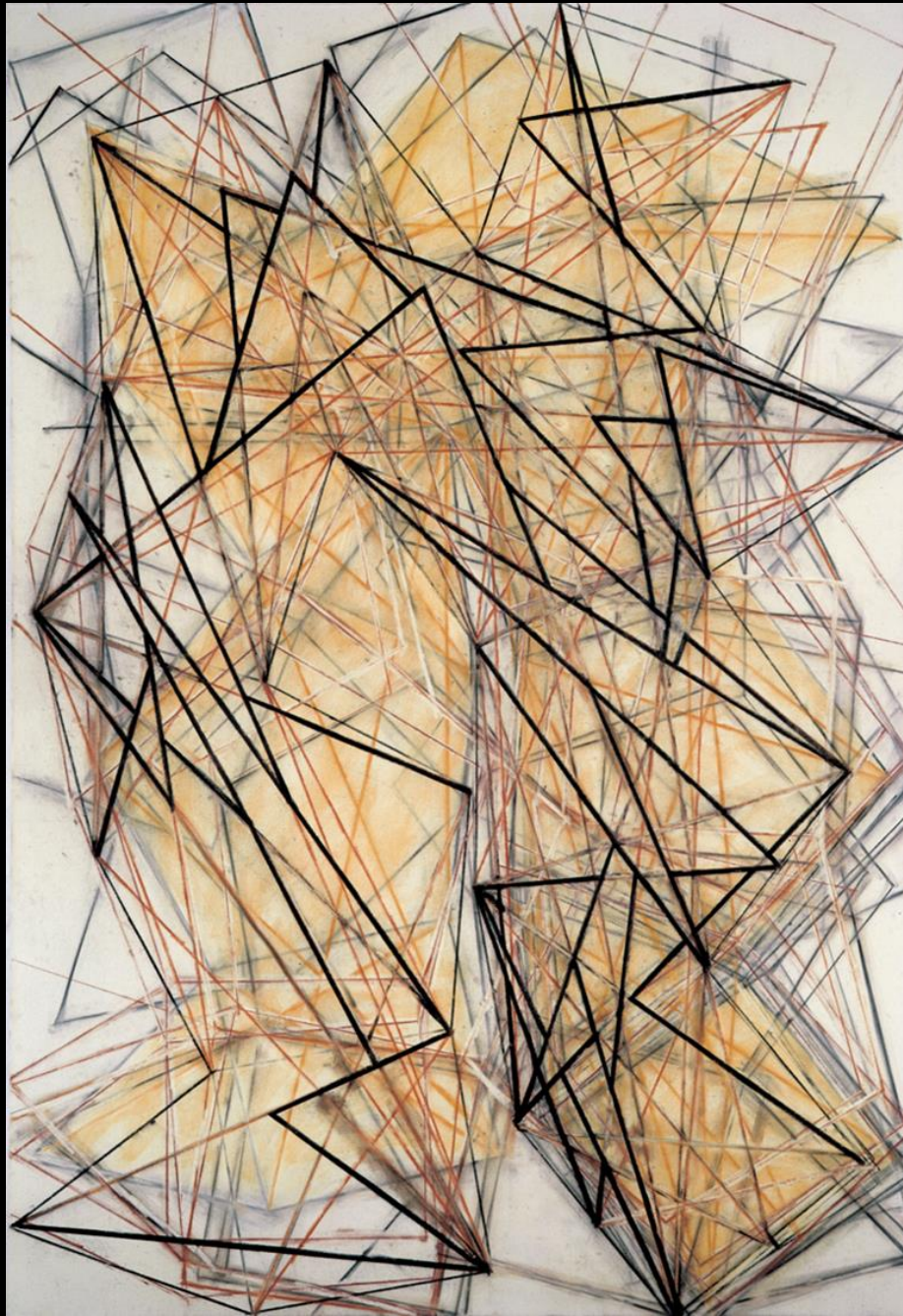


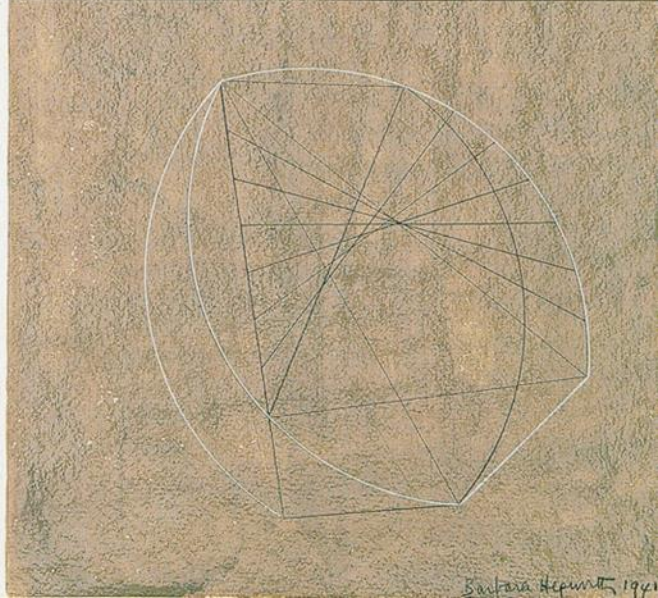
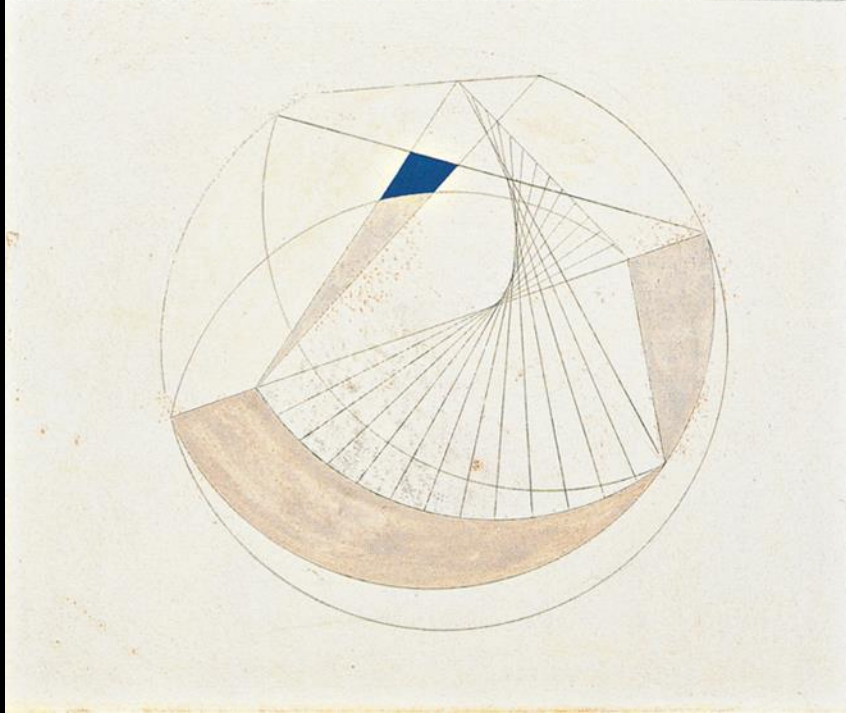
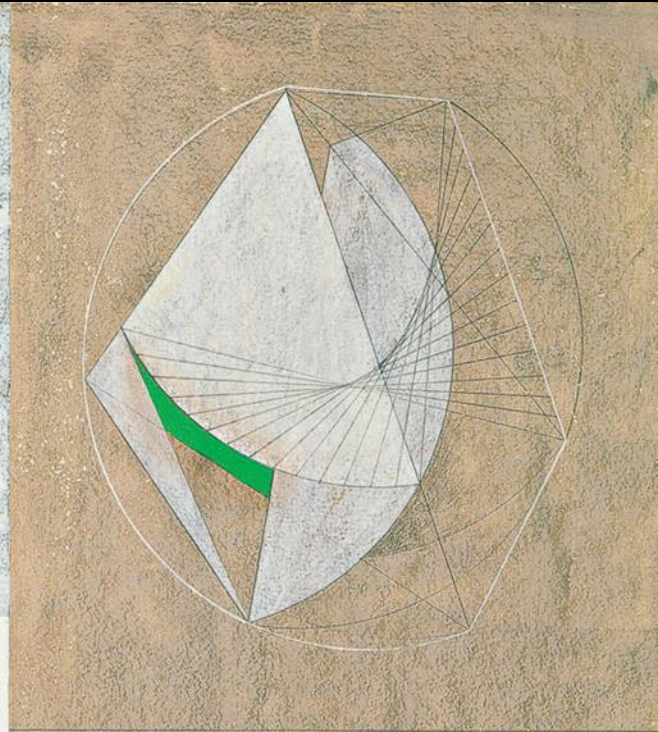
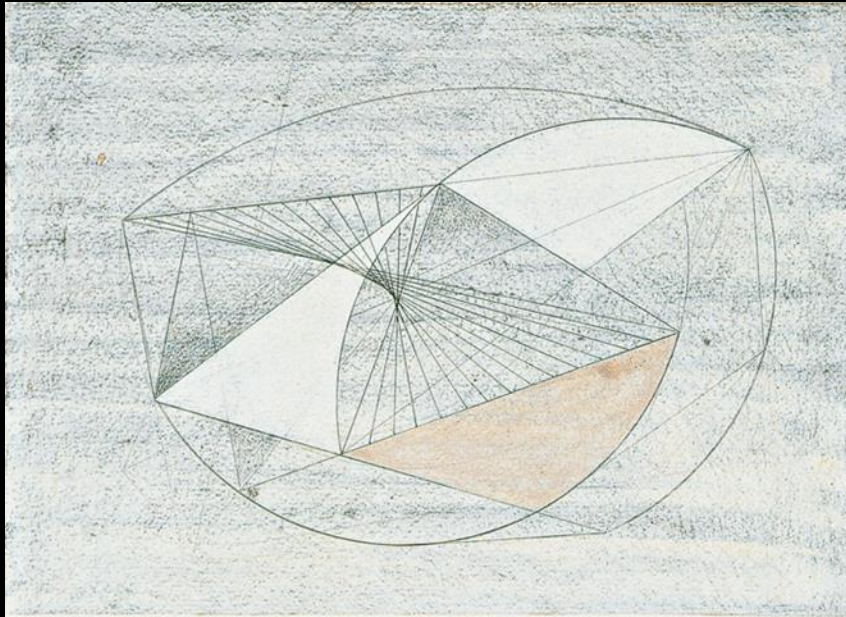
Maunder Thursday Festival Before the Ducal Palace in Venice

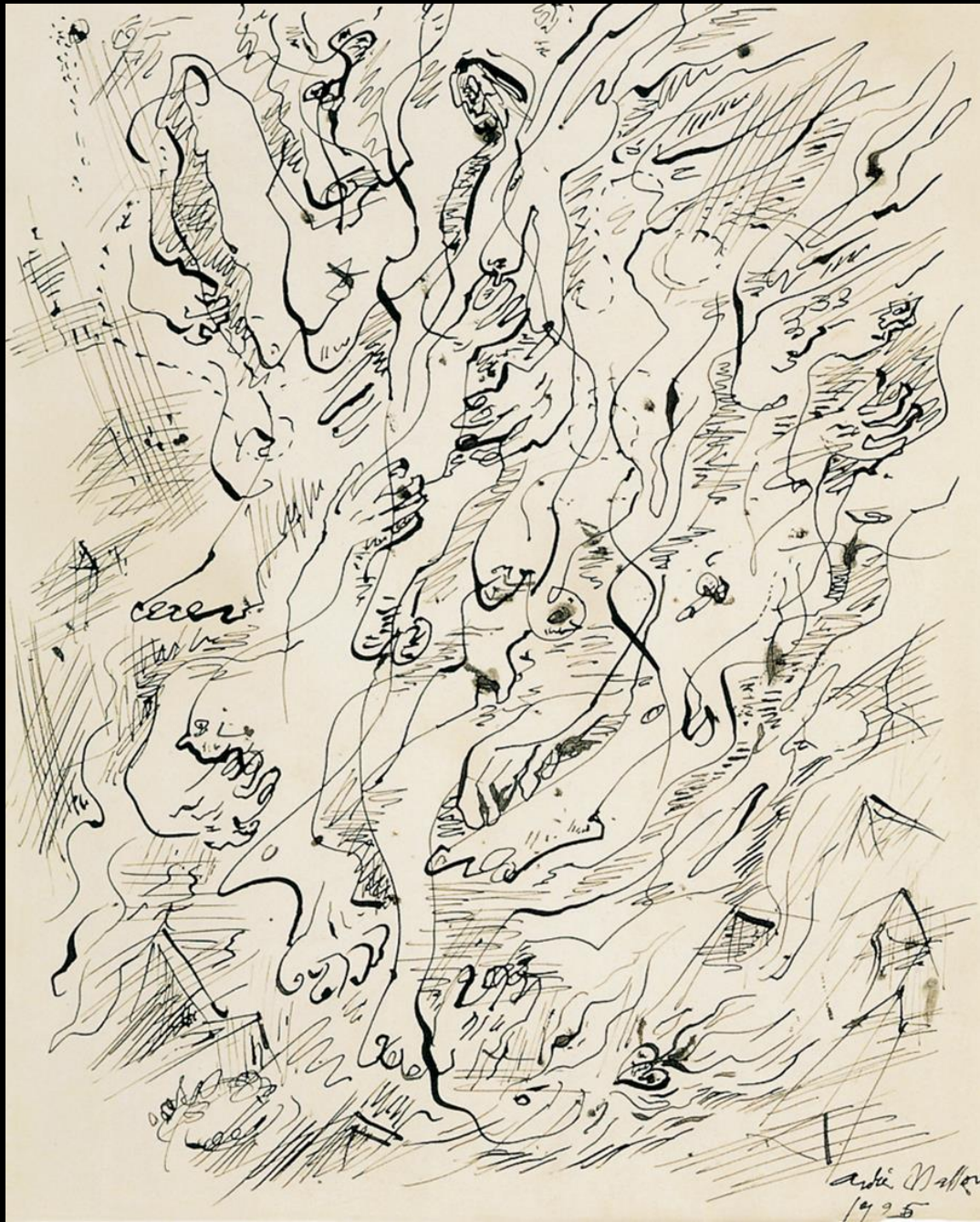
Canaletto



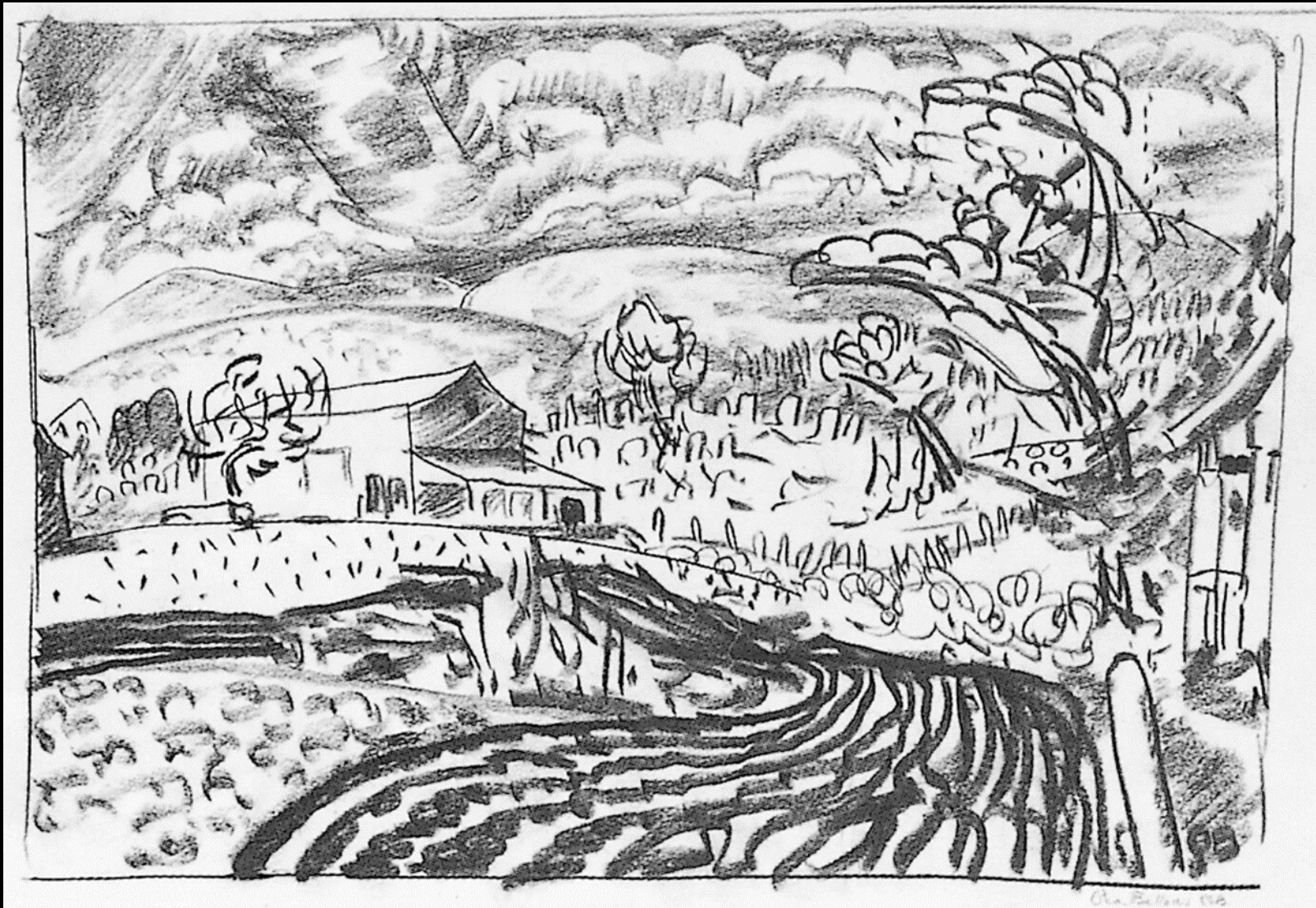












all lights as high as possible
get color out of shadows

Woodstock -

Actual lines



Implied lines



1 2 3 4 5 6 7



Pentateuch with Prophetical Readings and the Five Scrolls



וינו יהוה להחיות ואלו
בו והוא מרעה הנשים
לנעמי פרד יהוה אשר
לא השכיח לה גאלהום
והוא שמו בשרא
והוא למשיב נפש
הכלל שיבתו כי כלת
אשר אהבתו ילדתי
אשר הוא סופה לו
משבעה בנים והוא
נעמי את הילד והשתחו
פדסה ותהי לו לאמנה
והוא אנה לו השכנת
שם לאמר ילד בו לנעמי
והוא אנה שמו עם
הוא אנה אנה ויהי
ואלה
הולדת פרץ פרץ הולד
את חערז ויהי
הולד את דם ודם חולד
את עמי ערב ושמיערב
הולד את נחשו ונחשו
הולד את שלמה ושלמה
הולד את בעש ובעש סה
הולד את עמר ורעם
הולד את שיש ושיס כה
הולד את דוד

Pentateuch with Prophetical Readings & Five Scrolls (detail)

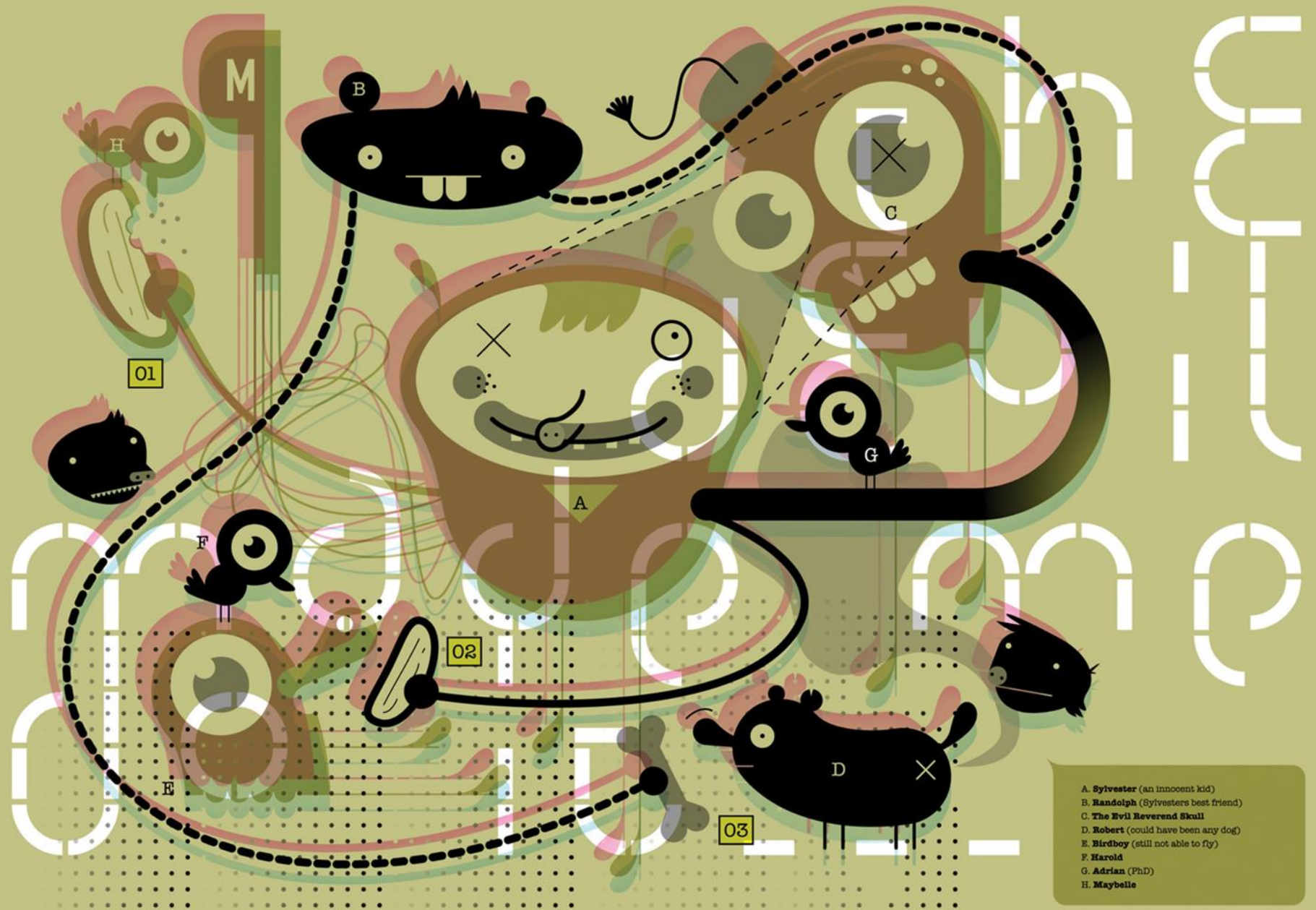


Pentateuch with Prophetical Readings & Five Scrolls (detail)



The Devil Made Me Do It

"Sauerkids" (Mark Moget & Taco Sipma)



- A. Sylvester (an innocent kid)
- B. Randolph (Sylvester's best friend)
- C. The Evil Reverend Skull
- D. Robert (could have been any dog)
- E. Birdboy (still not able to fly)
- F. Harold
- G. Adrian (PhD)
- H. Maybelle



The Third of May, 1808

Goya





Portrait of Artist's Wife Standing with Hands on Hips Egon Schiele



Vertical lines
communicate strength,
stability, and authority

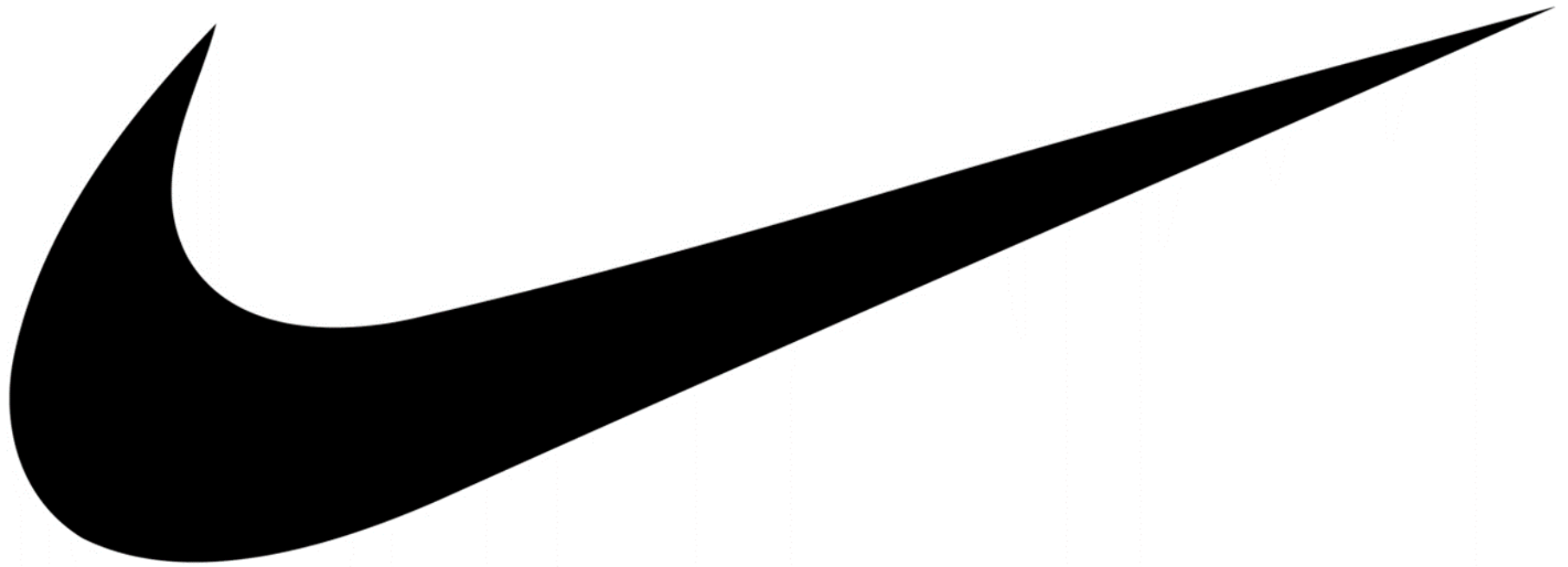


Horizontal lines
communicate calm,
peace, and passiveness



Diagonal lines
communicate movement,
action, and drama





The Bedroom (First Version)

Vincent van Gogh



The Bedroom (Second Version)

Vincent van Gogh



The Bedroom (Third Version)

Vincent van Gogh

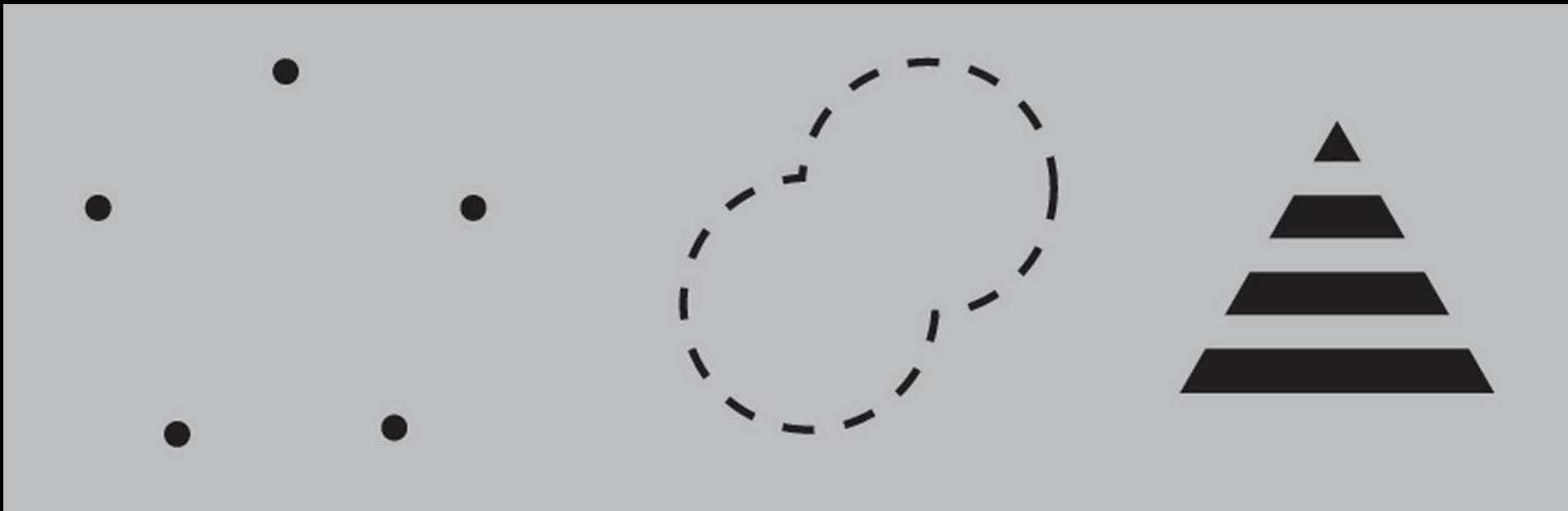


Shape





Implied Shapes





AT&T

Contrast



Obey

Shepard Fairey



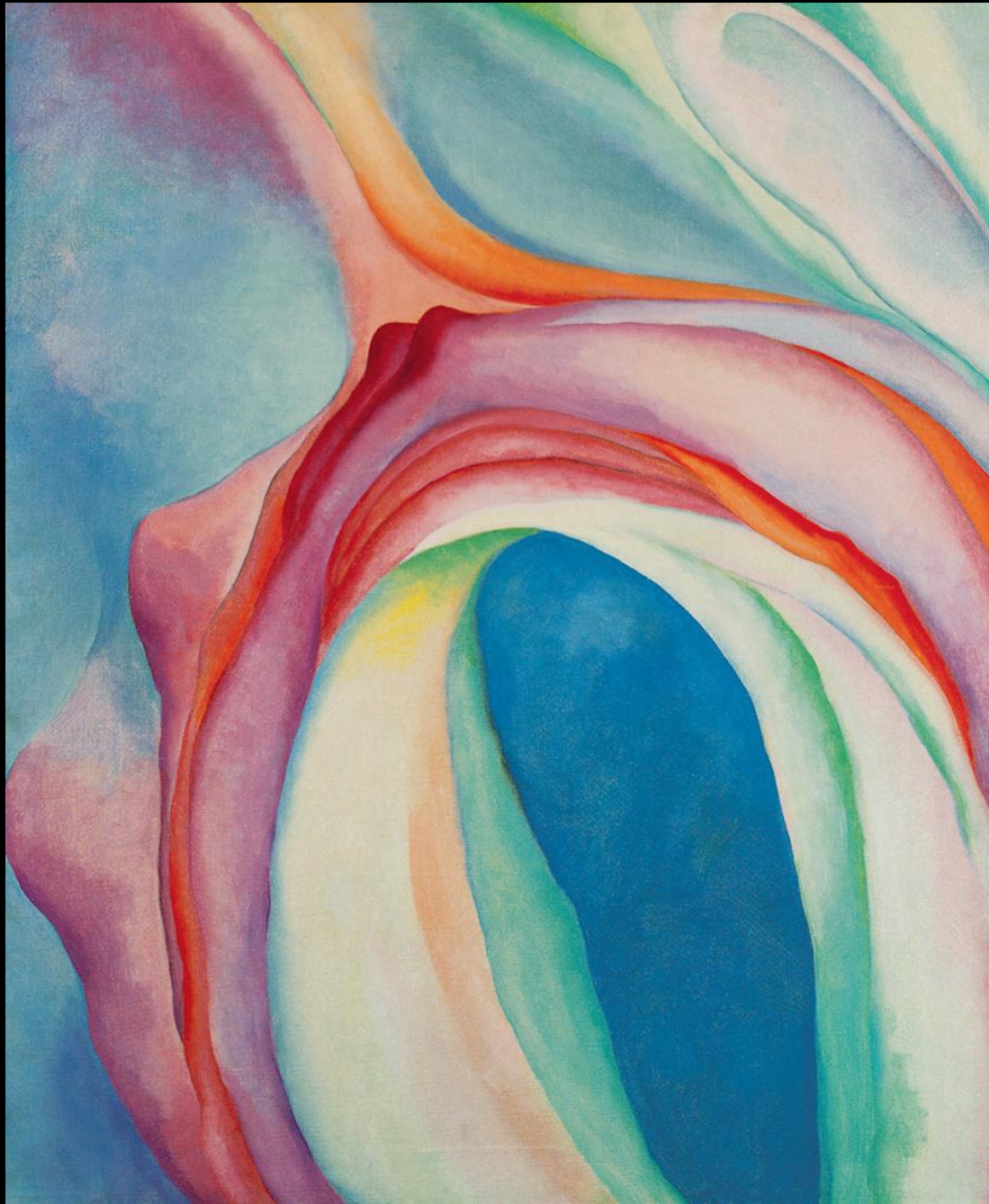
Obey (view of posters as they were installed in public)

Shepard Fairey



Music – Pink and Blue II

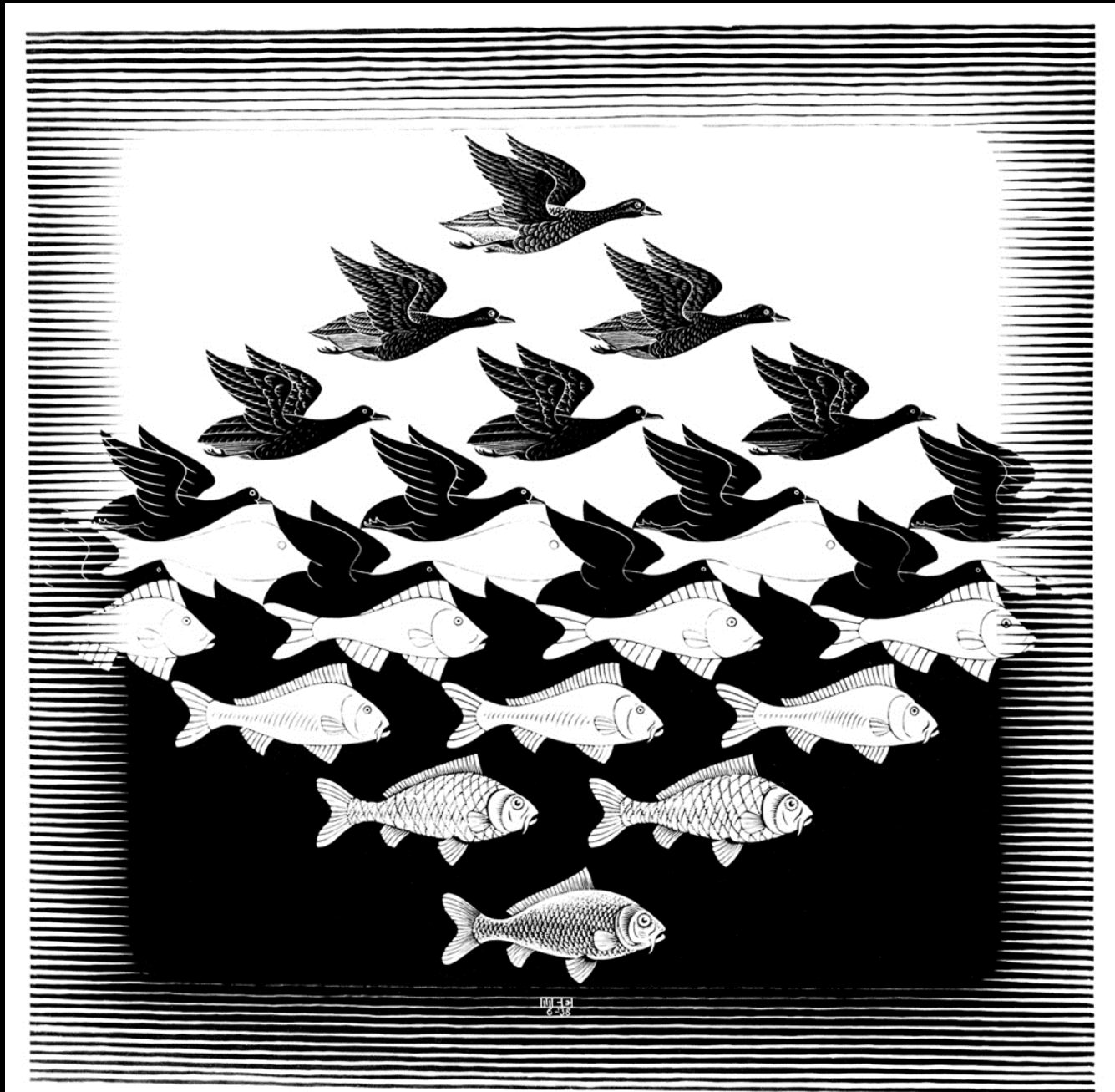
Georgia O'Keeffe



BIG TEN®
CONFERENCE

Sky and Water I

M.C. Escher



Conclusion



Banner of Las Navas de Tolosa



Review Questions



- The dark printed words on the page of a book are easily read because they are printed on a light ground. This is an example of the principle of _____.

- a. harmony
- b. variety
- c. contrast
- d. proportion
- e. emphasis

- The dark printed words on the page of a book are easily read because they are printed on a light ground. This is an example of the principle of _____.

- a. harmony
- b. variety
- c. **contrast**
- d. proportion
- e. emphasis

- Drawings discovered by overflying aircraft because they are so huge, include an enormous image of a spider.

- a. Nazca Lines
- b. Pampas Incisions
- c. Amazon Sketches
- d. Rio Etchings
- e. Andean Carvings



- Drawings discovered by overflying aircraft because they are so huge, include an enormous image of a spider.

- a. **Nazca Lines**
- b. Pampas Incisions
- c. Amazon Sketches
- d. Rio Etchings
- e. Andean Carvings

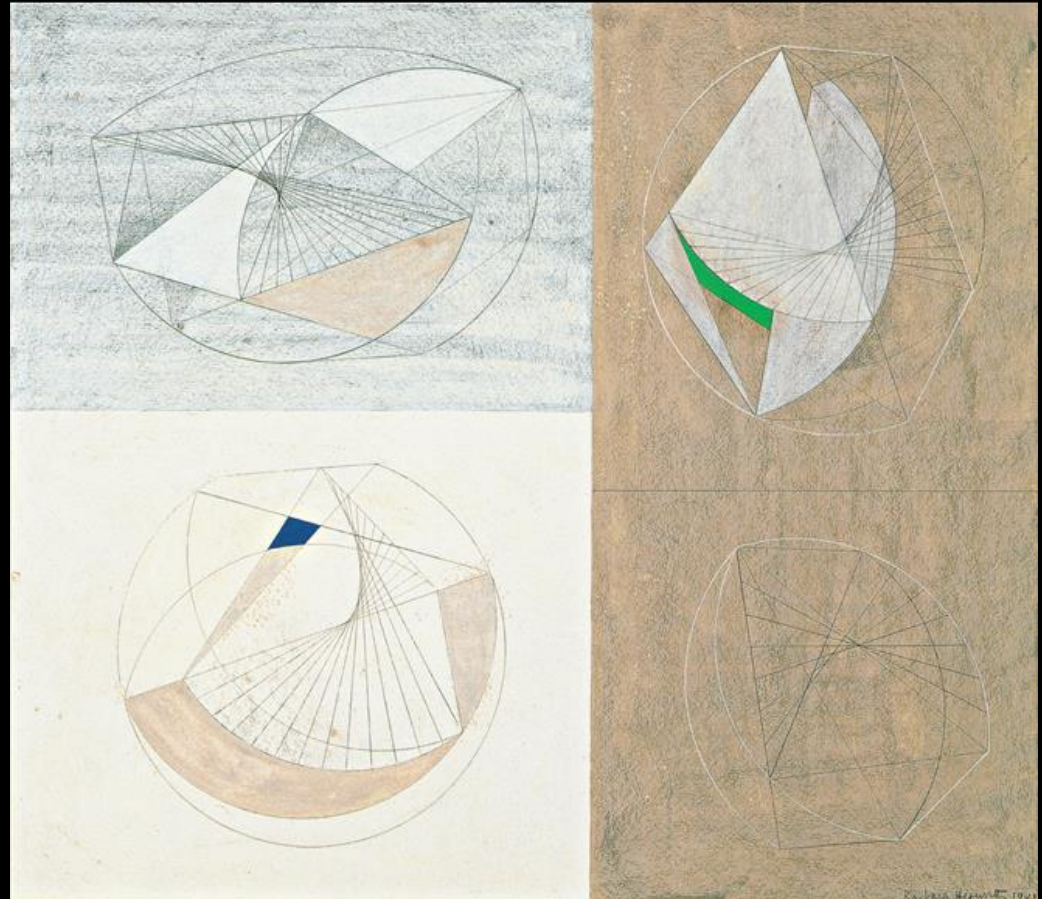


- Line can be used as a tool to _____.
- a. demarcate boundaries
- b. imply direction
- c. give a sense of surface
- d. indicate movement
- e. all of the above

- Line can be used as a tool to _____.
- a. demarcate boundaries
- b. imply direction
- c. give a sense of surface
- d. indicate movement
- e. all of the above

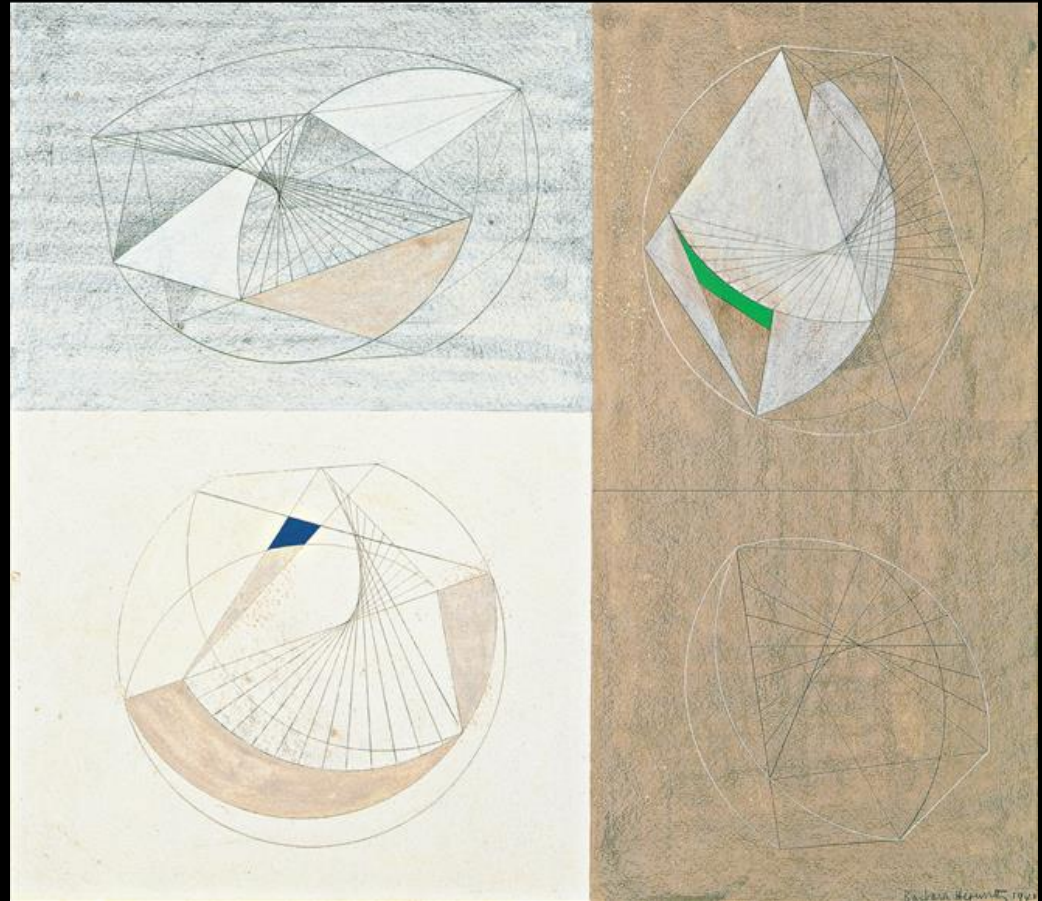
- Barbara Hepworth uses line to plan and visualize her 3-dimensional art. What kind of 3-D art does she produce?

- a. Sculpture
- b. Fibers
- c. Ceramics
- d. Performance
- e. Video



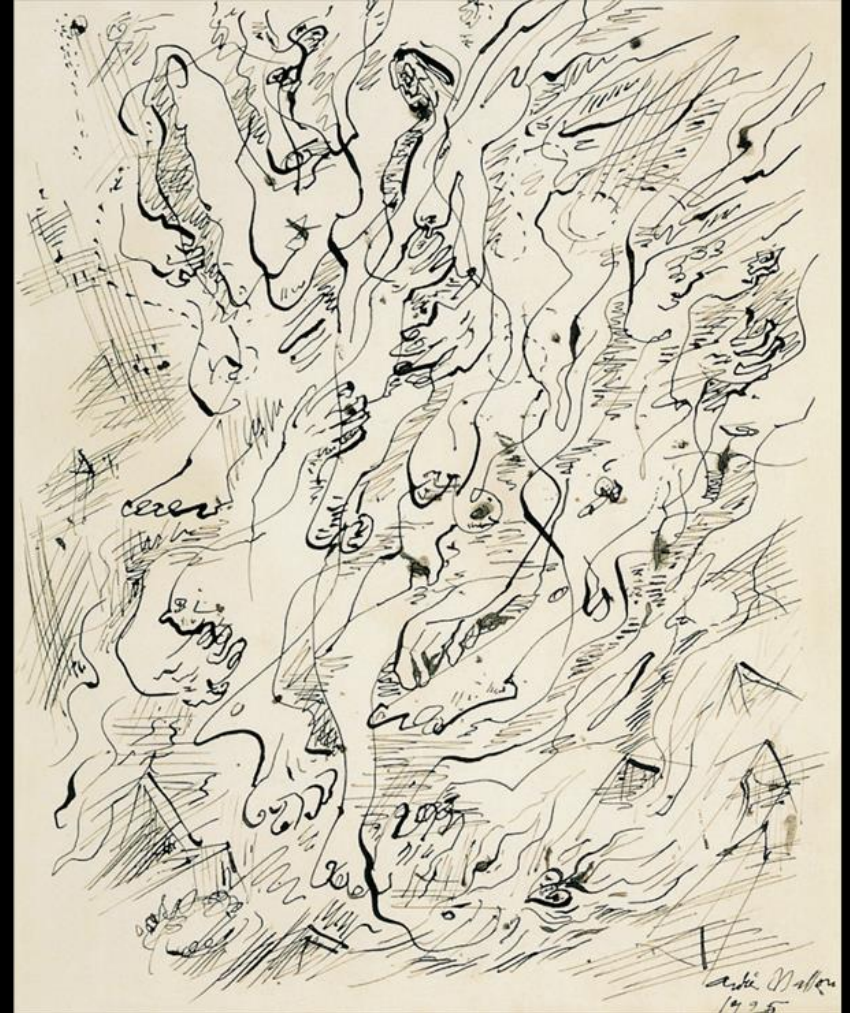
- Barbara Hepworth uses line to plan and visualize her 3-dimensional art. What kind of 3-D art does she produce?

- a. Sculpture
- b. Fibers
- c. Ceramics
- d. Performance
- e. Video



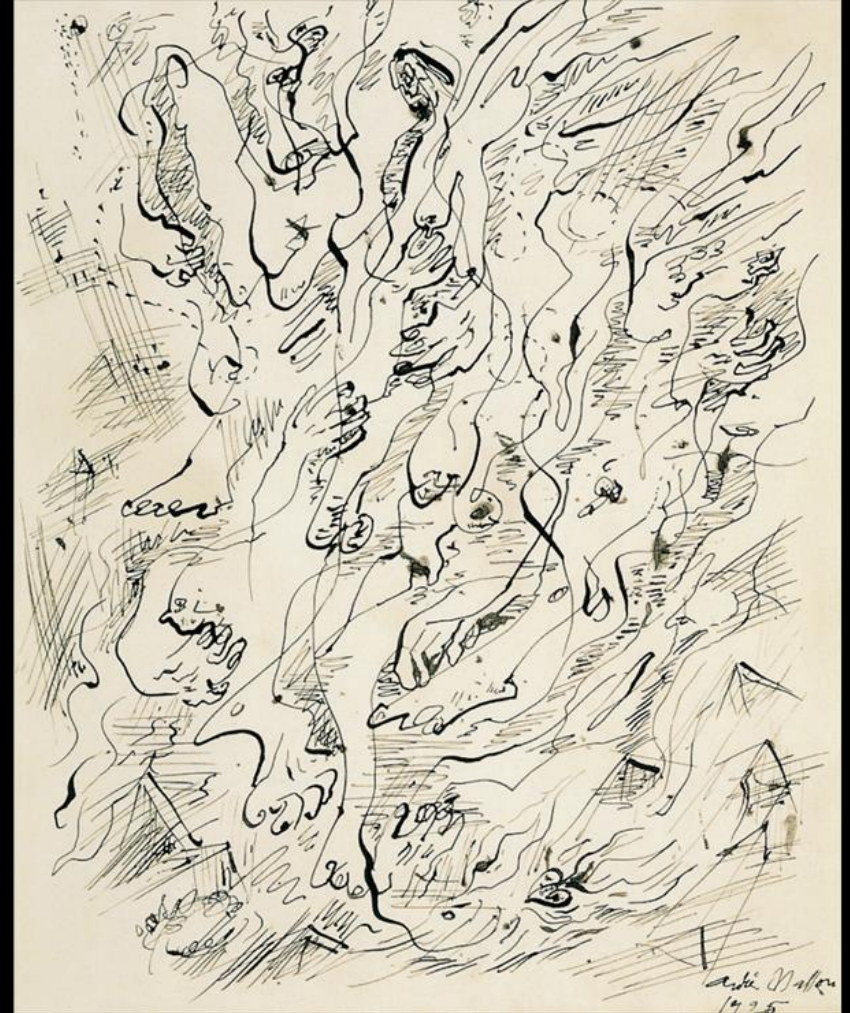
- This artist would sometimes go for days without food or sleep in an attempt to explore deep-rooted sources of creativity and truth.

- a. George Bellows
- b. Canaletto
- c. Andre Masson
- d. CLAMP
- e. Sauerkids



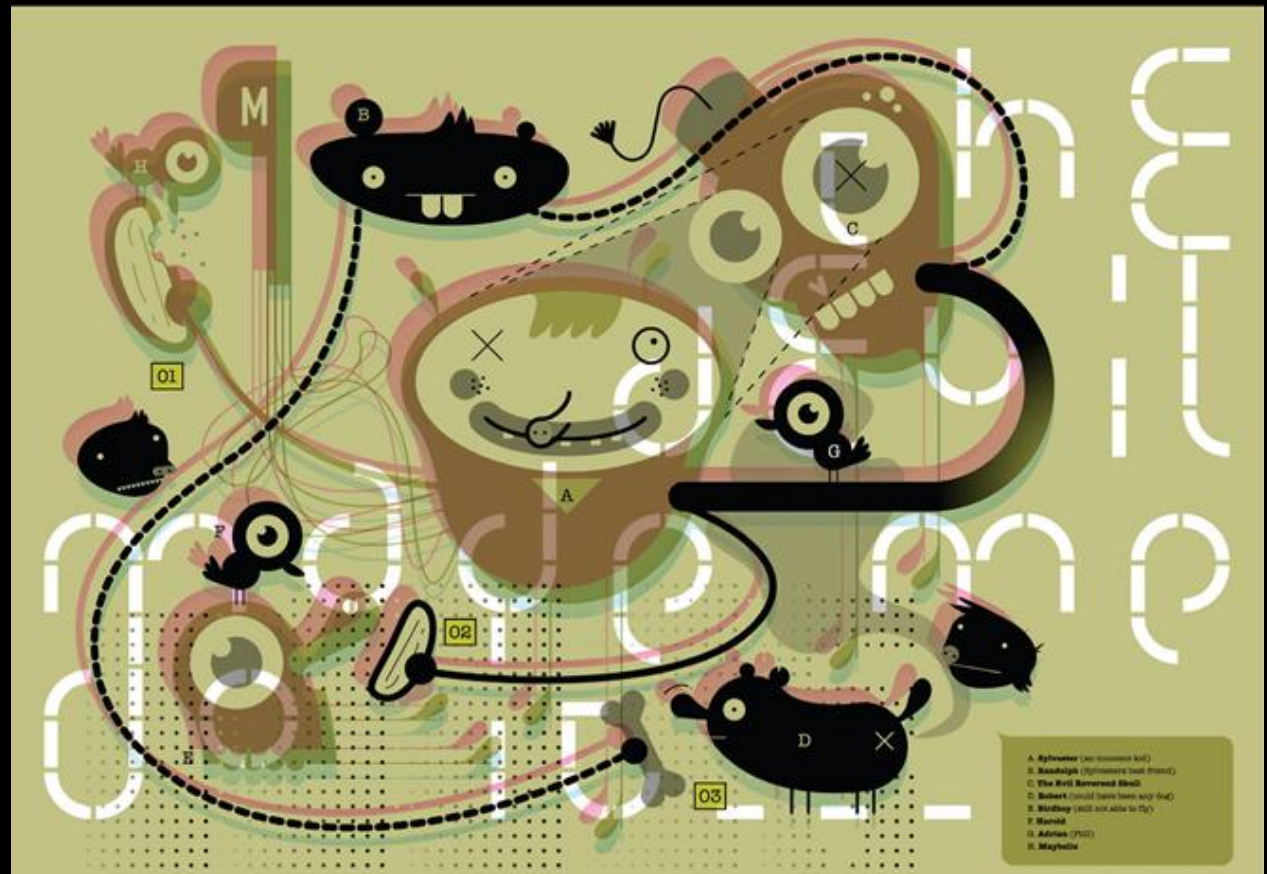
- This artist would sometimes go for days without food or sleep in an attempt to explore deep-rooted sources of creativity and truth.

- a. George Bellows
- b. Canaletto
- c. Andre Masson
- d. CLAMP
- e. SauerKids



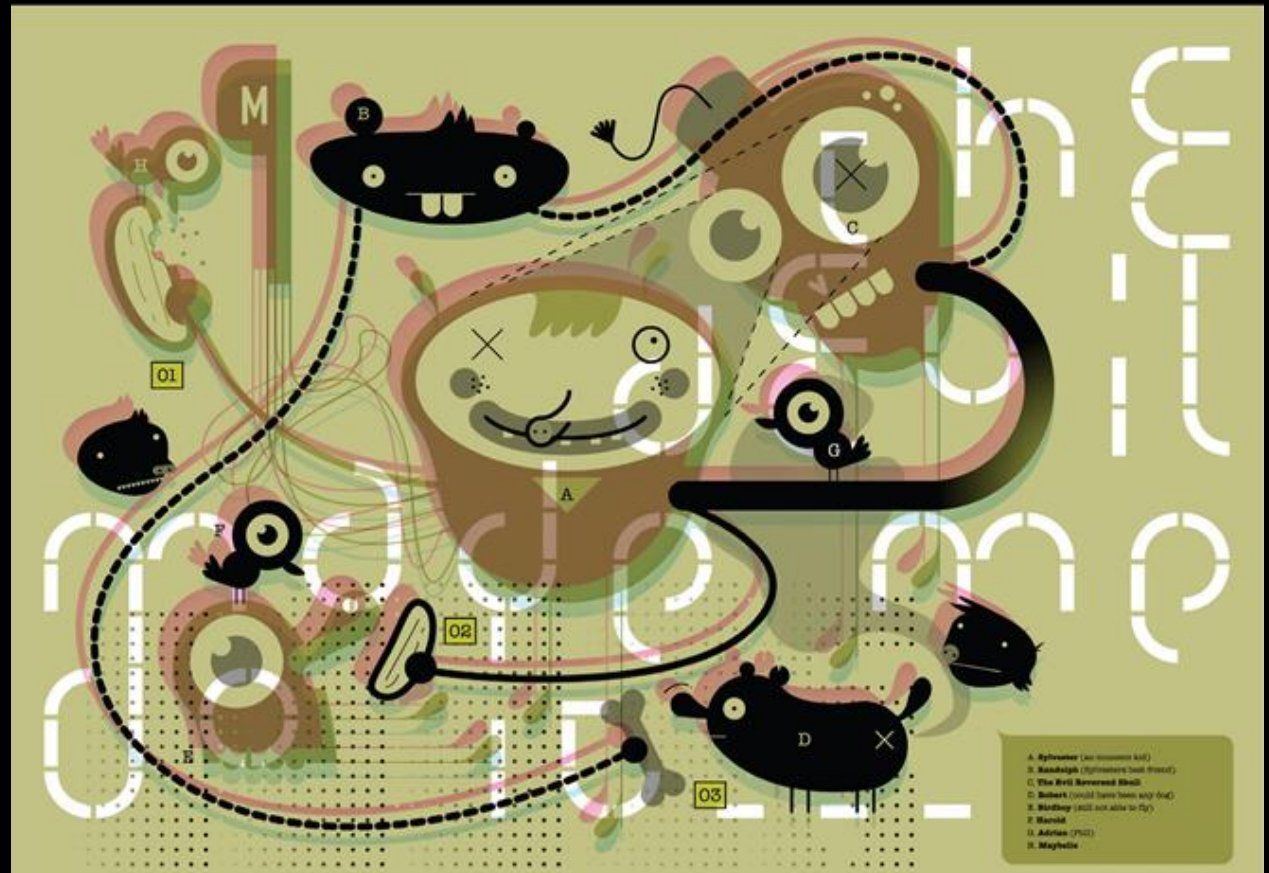
- Dashes and grids in *The Devil Made Me Do It*, by Sauerkids, are a good example of this kind of line:

- a. Directional
- b. Implied
- c. Actual
- d. Rhythmic
- e. Organic



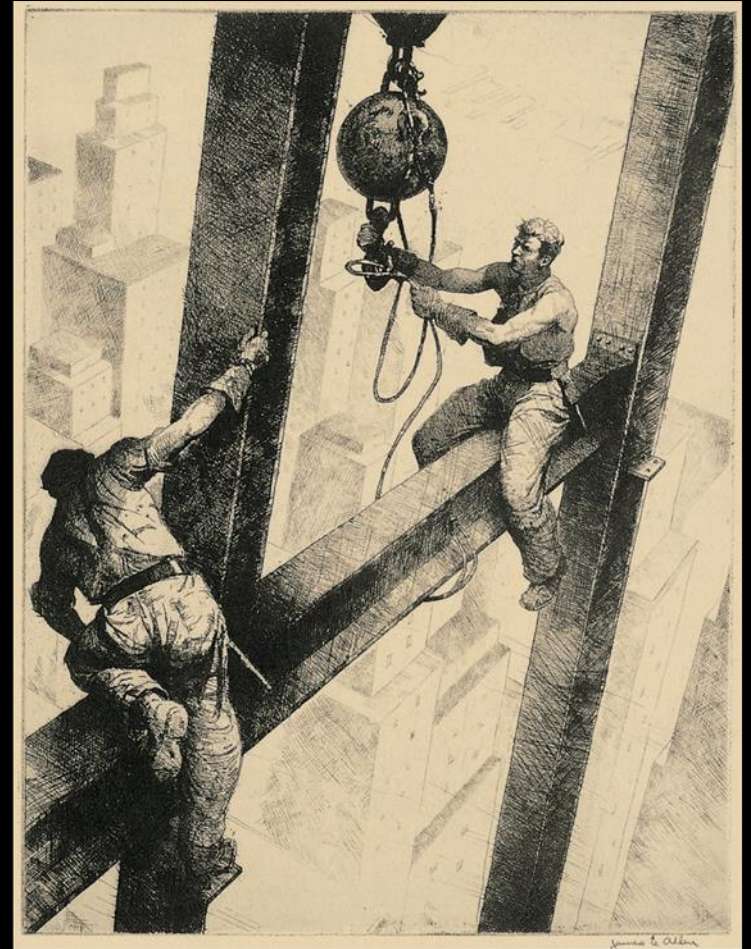
- Dashes and grids in *The Devil Made Me Do It*, by Sauerkids, are a good example of this kind of line:

- a. Directional
- b. Implied
- c. Actual
- d. Rhythmic
- e. Organic



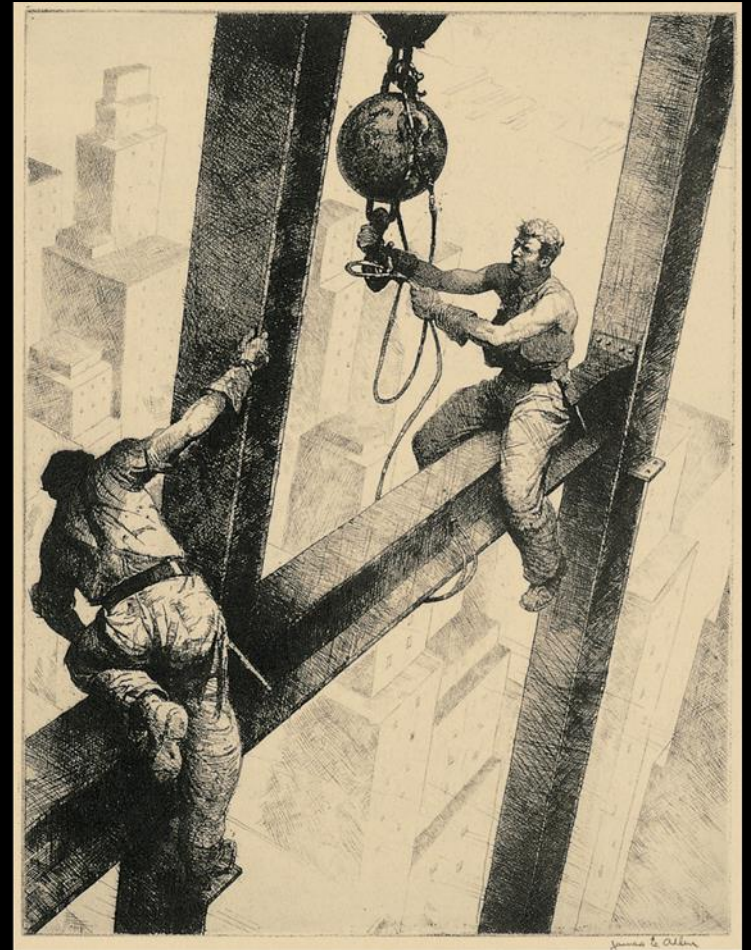
- In *The Connectors*, James Allen uses this kind of line to draw attention to the great height the faced the builders of the Empire State Building:

- a. Directional
- b. Organic
- c. Implied
- d. Unfettered
- e. Irregular



- In *The Connectors*, James Allen uses this kind of line to draw attention to the great height the faced the builders of the Empire State Building:

- a. Directional
- b. Organic
- c. Implied
- d. Unfettered
- e. Irregular



- Vertical lines tend to communicate

_____°

- a. Calmness
- b. Passivity
- c. Action
- d. Strength
- e. Change

- Vertical lines tend to communicate

_____°

- a. Calmness
- b. Passivity
- c. Action
- d. Strength
- e. Change

- A shape which is mathematically regular and precise is called _____.

- a. Geometric
- b. Organic
- c. Implied
- d. Negative
- e. Positive

• A shape which is mathematically regular and precise is called _____.

- a. Geometric
- b. Organic
- c. Implied
- d. Negative
- e. Positive

- This artist used contrasting positive and negative shapes to create his “Obey” campaign, an expression of guerrilla marketing and street theater.

- a. Canaletto
- b. James Allen
- c. CLAMP
- d. Barbara Hepworth
- e. Shepard Fairey



- This artist used contrasting positive and negative shapes to create his “Obey” campaign, an expression of guerrilla marketing and street theater.

- a. Canaletto
- b. James Allen
- c. CLAMP
- d. Barbara Hepworth
- e. Shepard Fairey



- Using negative shape, the graphic designer Al Grivetti inserted this number into the Big Ten logo to express the league's expansion.

- a. 12
- b. 10
- c. 11
- d. 22
- e. 42



- Using negative shape, the graphic designer Al Grivetti inserted this number into the Big Ten logo to express the league's expansion.

- a. 12
- b. 10
- c. 11
- d. 22
- e. 42

