

Content & Analysis

•

(Content)



Equestrian Statue of Marcus Aurelius





OF ALL THE FOUNDATIONS OF
 ESTABLISHMENTS FOR PIOUS OR
 CHARITABLE USES WHICH EVER
 SIGNALIZED THE SPIRIT OF THE
 AGE. THE COMPREHENSIVE
 WISDOM AND WISDOM OF THE FOUNDER
 NONE CAN BE NAMED MORE DESERVING
 OF THE APPROBATION OF MANKIND
 THAN THE SMITHSONIAN INSTITUTION
 SHOULD IT BE FAITHFULLY CARRIED
 INTO EFFECT WITH AN EARNESTNESS AND
 SAGACITY OF MEANS PROPORTIONED
 TO THE MEANS FURNISHED BY THE WILL OF
 THE FOUNDER TO THE GREATNESS AND
 SIMPLICITY OF HIS DESIGN AS BY HIMSELF
 DECLARED. HIS INCREASE AND DIFFUSION
 OF KNOWLEDGE AMONG MEN HIS NAME
 WILL BE EVER ENROLLED AMONG
 THE EMINENT BENEFACTORS OF MANKIND.
 WHOEVER KNOWS KNOWLEDGE MULTIPLIES
 THE USES WHICH HE IS ABLE TO TURN
 THE GIFT OF HIS CREATOR.

JOHN QUINCY ADAMS 1767-1848
 SIXTH PRESIDENT OF THE UNITED STATES

MODERN
 IN SCIEN
 AS WELL
 COULD NO
 ISOLATE
 CH POR
 HT ON
 E TENDEN
 E HUMAN
 URCES O
 RROW M
 PORTANCE
 RSUIT, BU
 BRANCH
 R THEY A
 ADORN
 ENCE IS
 ICH IMPR
 MAN FO
 GRESS A
 ELLECT T
 NDITION

FIRST

NATIONAL MUSEUM OF
 AMERICAN HISTORY

Infinity

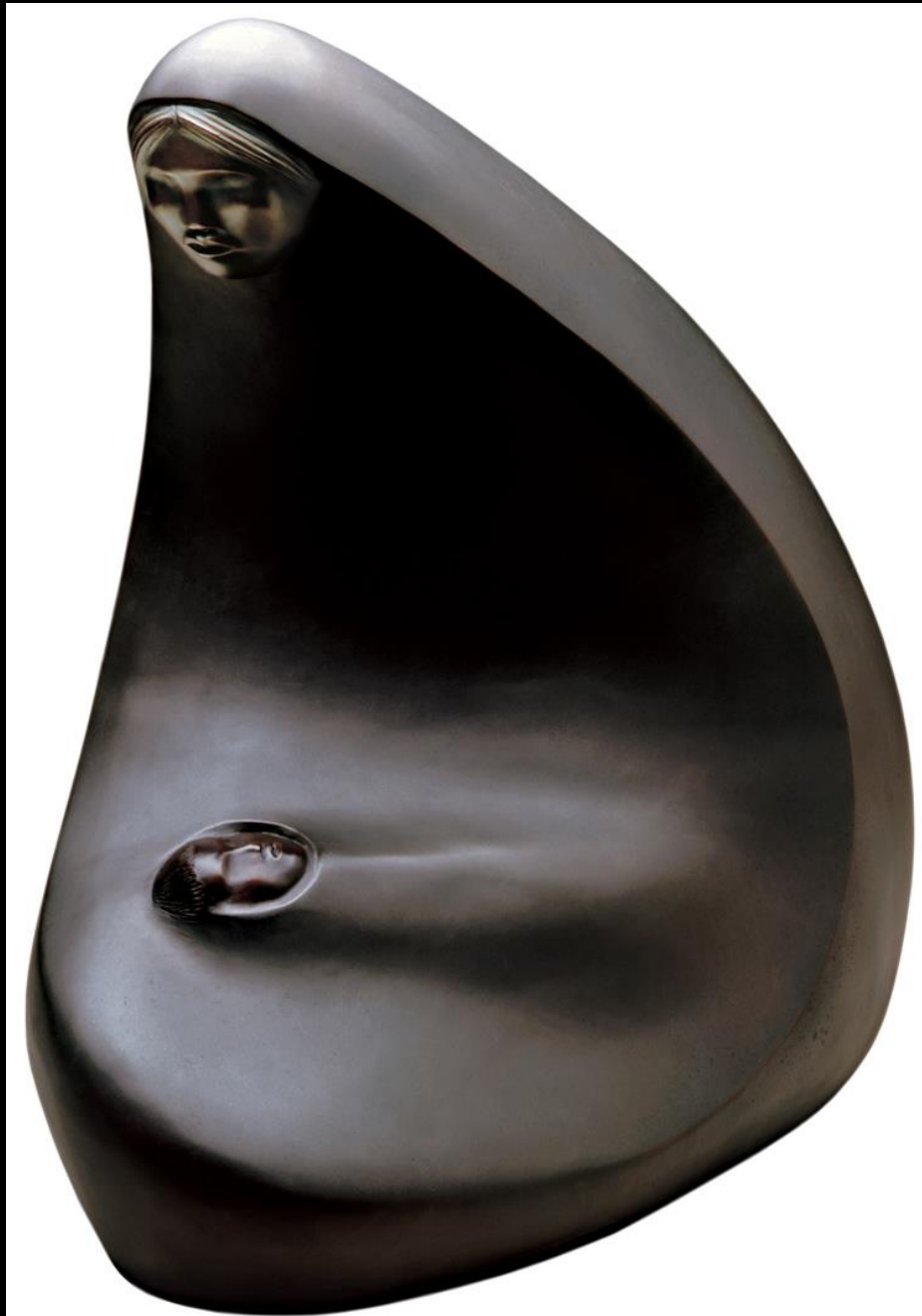
Jose de Rivera



Infinity

Jose de Rivera





(Analysis)

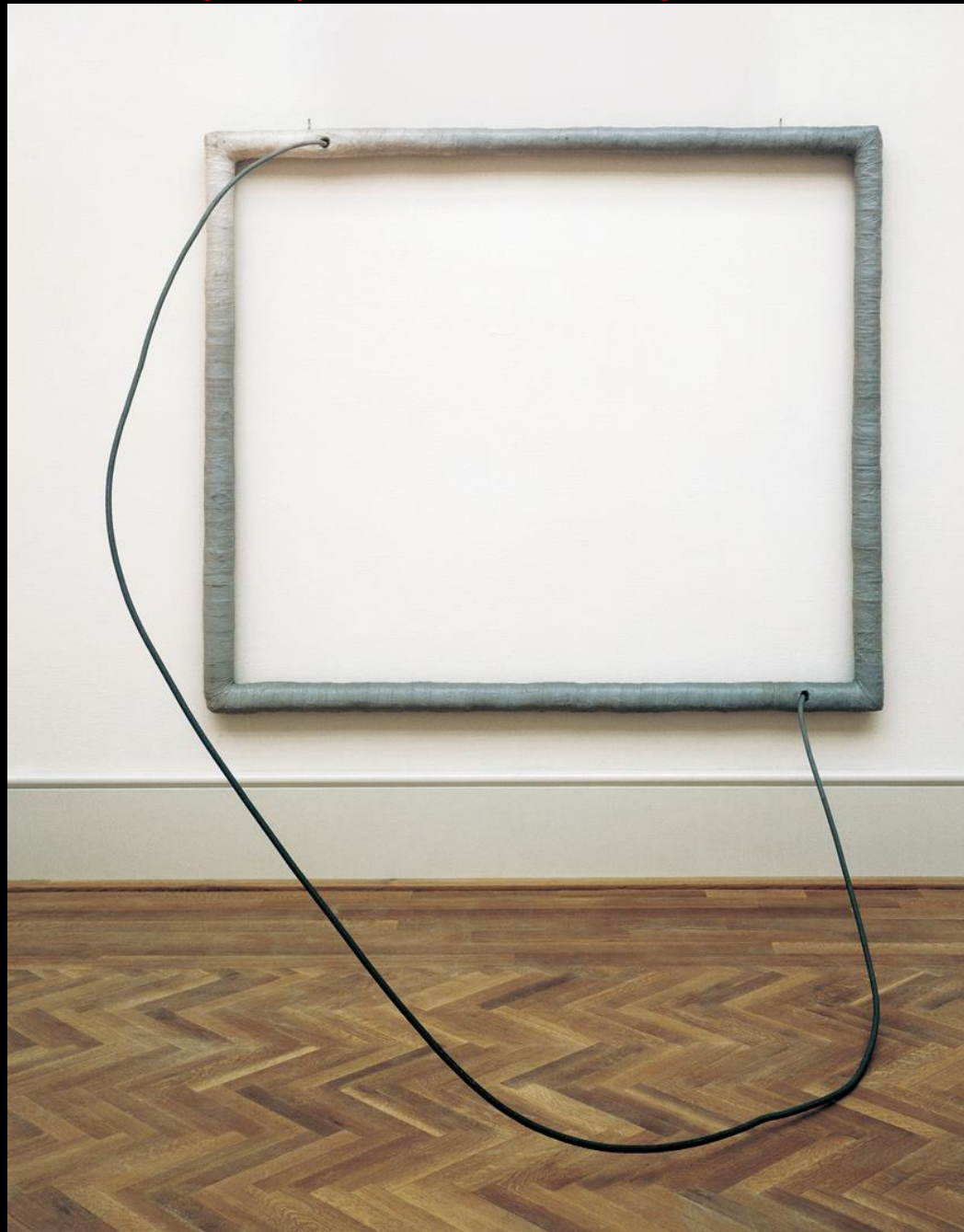




Hang-Up

(Biographical Analysis)

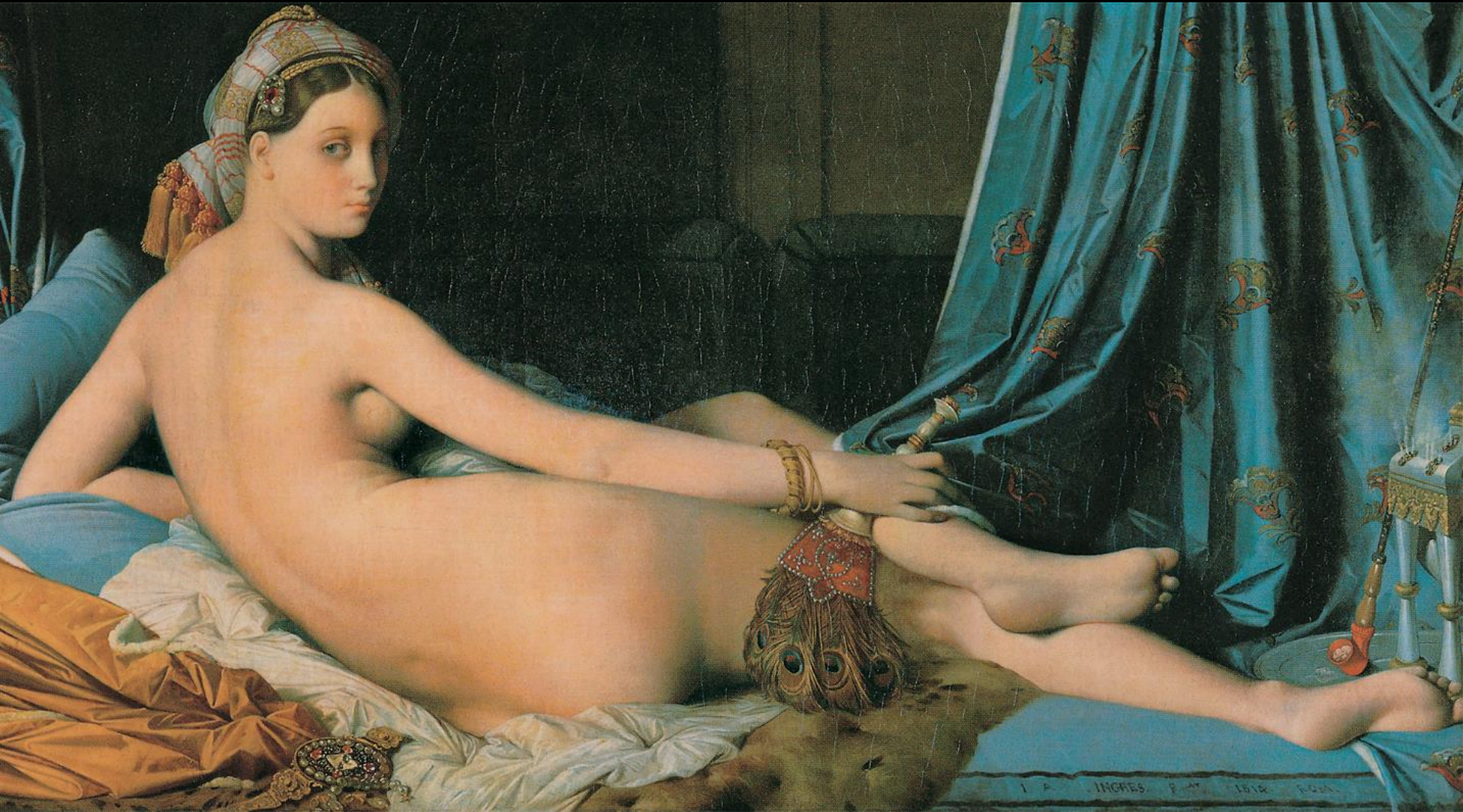
Eva Hesse



Grande Odalisque

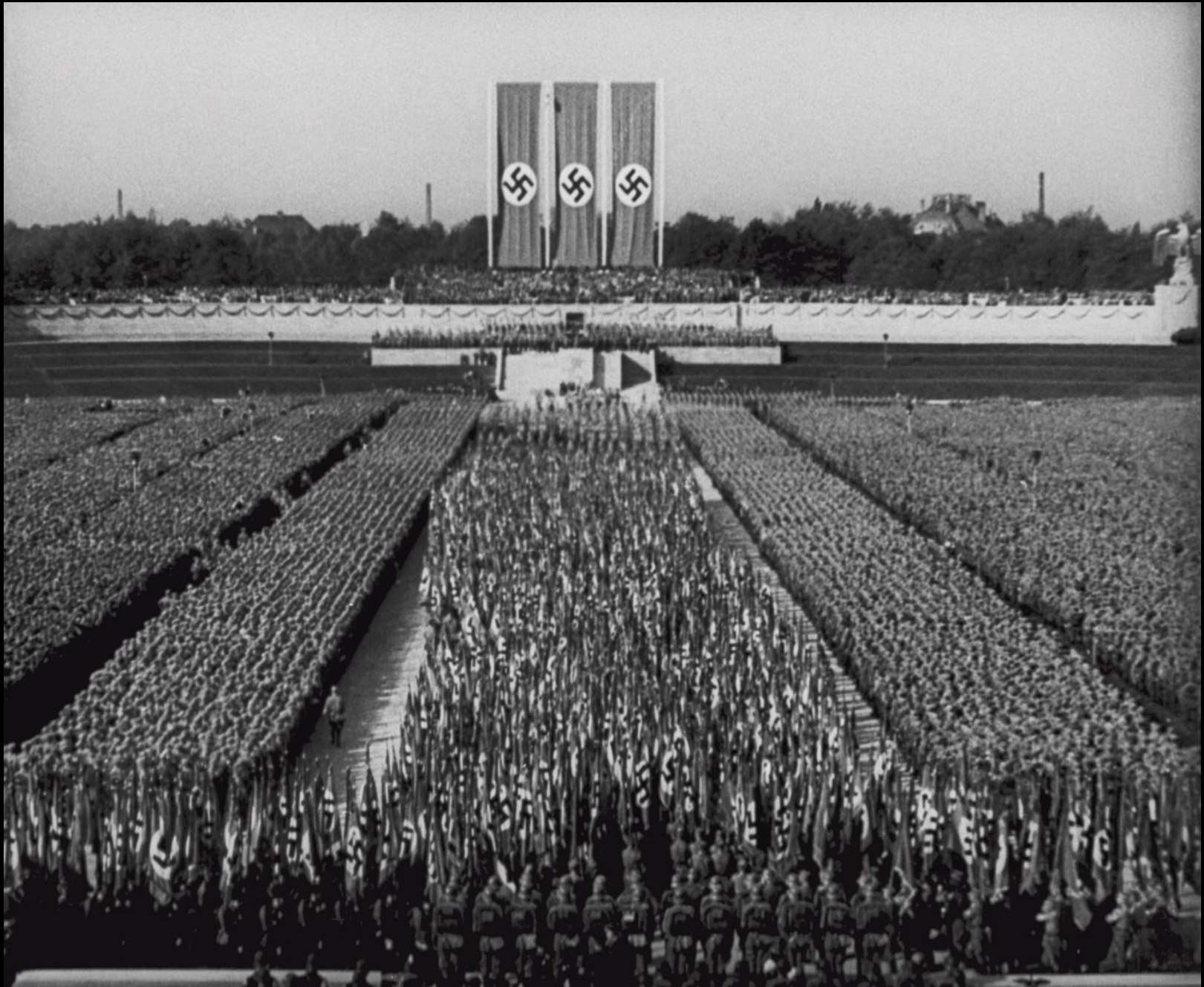
(Feminist Analysis)

Ingres



Triumph of the Will (Contextual Analysis)

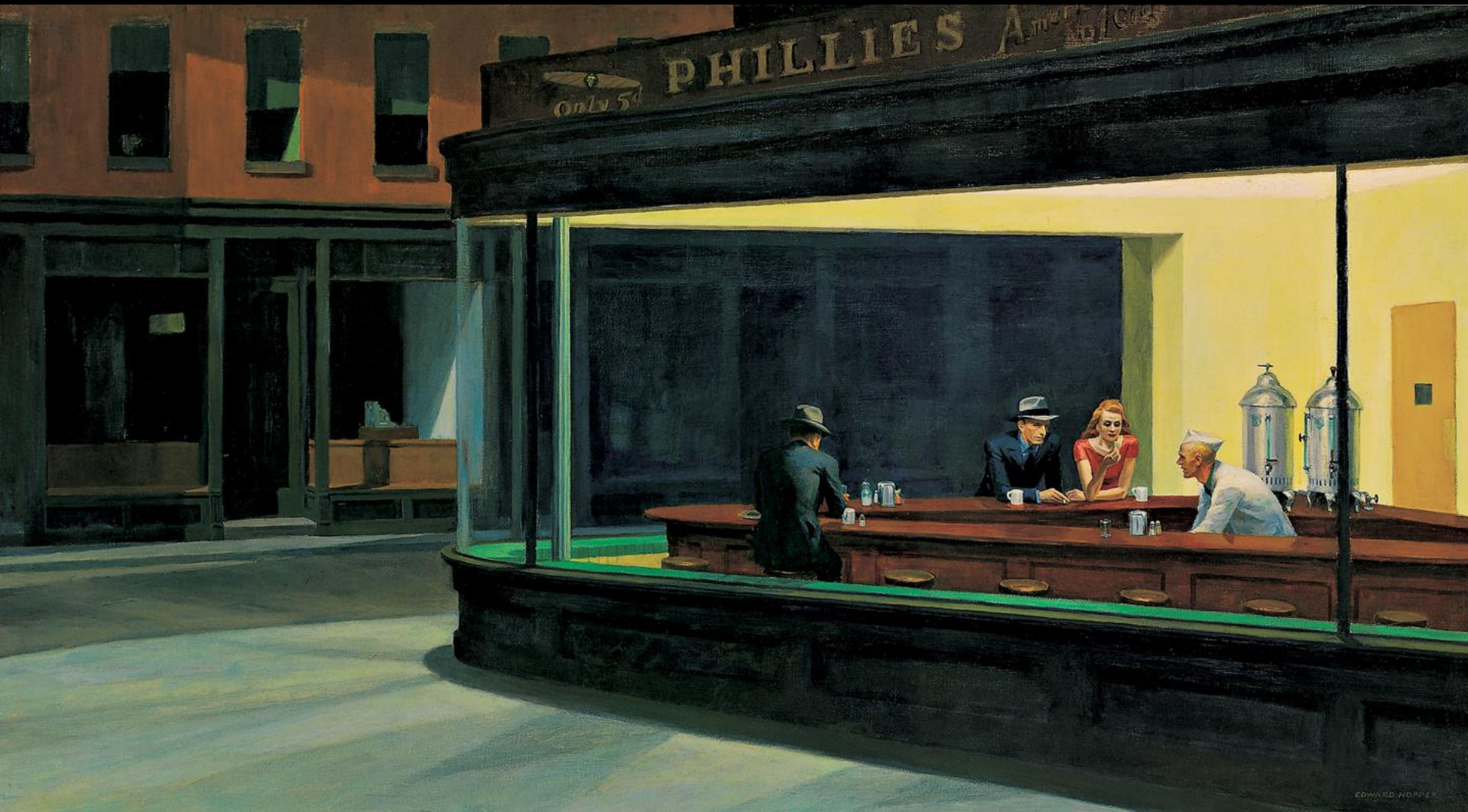
Leni Riefenstahl



Nighthawks

(Psychological Analysis)

Edward Hopper



Las Meninas

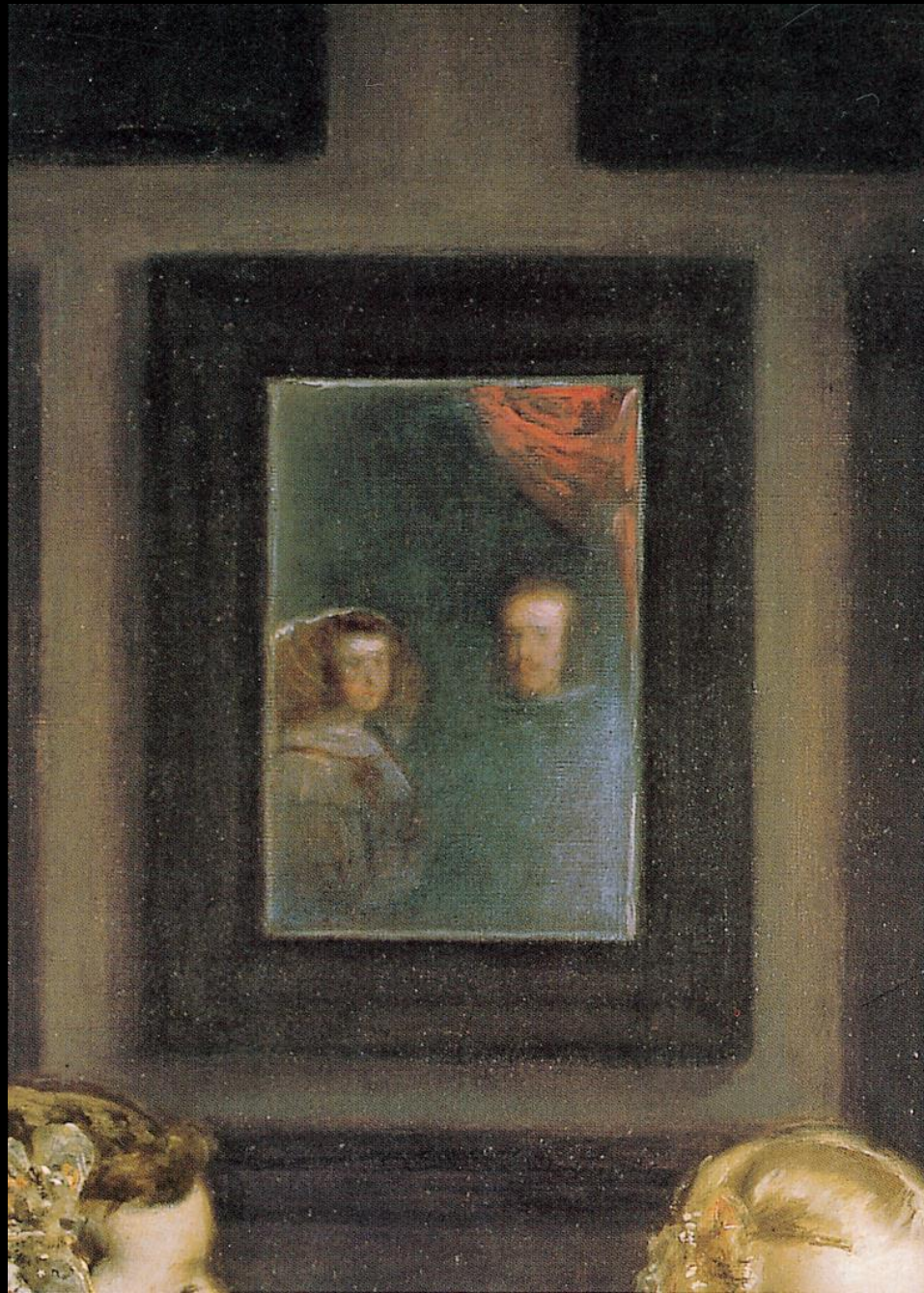
(Formal Analysis)

Diego Velazquez



Las Meninas (detail)

Diego Velazquez

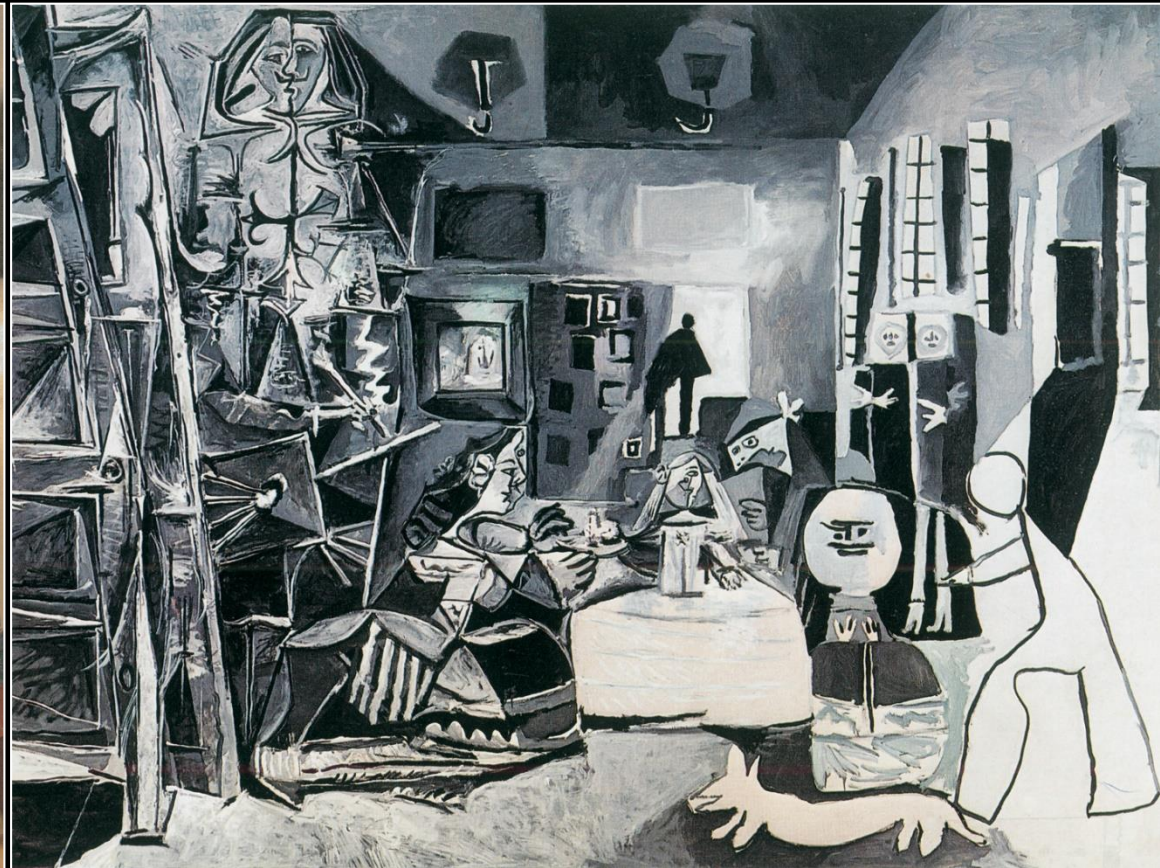


(Imitation & Individual Style)





Las Meninas (comparison)





A work of art is the product of interrelationships between various art elements and _____.

- a. colors
- b. structures
- c. contexts
- d. shapes
- e. principles

A work of art is the product of interrelationships between various art elements and _____.

- a. colors
- b. structures
- c. contexts
- d. shapes
- e. principles

If we can recognize the objects or people in a work of art, it is _____.

- a. representational
- b. objective
- c. ephemeral
- d. non-objective
- e. abstract

If we can recognize the objects or people in a work of art, it is _____.

- a. representational
- b. objective
- c. ephemeral
- d. non-objective
- e. abstract

Allan Houser's work *Reverie* is representational because _____.

- a. it is made of bronze
- b. it is abstracted
- c. it is lifesize
- d. it includes two shapes that we recognize as faces
- e. it is a sculpted form

Allan Houser's work *Reverie* is representational because _____.

- a. it is made of bronze
- b. it is abstracted
- c. it is lifesize
- d. it includes two shapes that we recognize as faces
- e. it is a sculpted form

Iconographic analysis interprets objects and figures in an artwork as _____.

- a. dreams and thoughts
- b. signs or symbols
- c. things that really exist
- d. geometric shapes
- e. proven facts

Iconographic analysis interprets objects and figures in an artwork as _____.

- a. dreams and thoughts
- b. signs or symbols
- c. things that really exist
- d. geometric shapes
- e. proven facts

Eva Hesse's minimalist sculpture Hang-Up can be interpreted biographically as _____

- a. showing that the artist was obsessed with form
- b. a window that leads to nothingness
- c. a window that tells you nothing
- d. a ridiculous way to make art
- e. a humorous party trick

Eva Hesse's minimalist sculpture Hang-Up can be interpreted biographically as _____

- a. showing that the artist was obsessed with form
- b. a window that leads to nothingness
- c. a window that tells you nothing
- d. a ridiculous way to make art
- e. a humorous party trick

Psychological analysis of Nighthawks by the artist Edward Hopper tells us that the painter was

_____.

- a. happy-go-lucky
- b. interested in flat colors
- c. a fashion model in his spare time
- d. expressing loneliness
- e. developing a new style of brushwork

Psychological analysis of Nighthawks by the artist Edward Hopper tells us that the painter was

_____.

- a. happy-go-lucky
- b. interested in flat colors
- c. a fashion model in his spare time
- d. expressing loneliness
- e. developing a new style of brushwork

A formal analysis of Las Meninas by Diego Velazquez would concentrate on this aspect of the work:

- a. its mood
- b. the artist's painting technique
- c. the characters of the people shown in the painting
- d. when it was created
- e. what was in the foreground and background

A formal analysis of Las Meninas by Diego Velazquez would concentrate on this aspect of the work:

- a. its mood
- b. the artist's painting technique
- c. the characters of the people shown in the painting
- d. when it was created
- e. what was in the foreground and background

Picasso studied and copied Las Meninas because

- a. it was by an Italian artist
- b. he was not interested in making original works of his own
- c. he was obsessed with the Spanish royal family
- d. he wanted to develop his own individual style
- e. his art college insisted he should

Picasso studied and copied Las Meninas because

- a. it was by an Italian artist
- b. he was not interested in making original works of his own
- c. he was obsessed with the Spanish royal family
- d. he wanted to develop his own individual style
- e. his art college insisted he should

Thomas Struth's photograph, Museo del Prado 7 is

- a. a perfect copy of Las Meninas by Velazquez
- b. a portrait of art appreciation
- c. deliberately old-fashioned in style
- d. based on the later works of Pablo Picasso
- e. an attempt to distract us from looking at Las Meninas.

Thomas Struth's photograph, Museo del Prado 7 is

- a. a perfect copy of Las Meninas by Velazquez
- b. a portrait of art appreciation
- c. deliberately old-fashioned in style
- d. based on the later works of Pablo Picasso
- e. an attempt to distract us from looking at Las Meninas.

The tools of formal analysis help us to _____

- a. dismiss the use of balance and focal point in a work
- b. understand how an artwork was made
- c. concentrate on the modern aspects of an artwork
- d. dig deeper into the history of an artwork
- e. understand what was happening to women at the time the work was made

The tools of formal analysis help us to _____

- a. dismiss the use of balance and focal point in a work
- b. understand how an artwork was made
- c. concentrate on the modern aspects of an artwork
- d. dig deeper into the history of an artwork
- e. understand what was happening to women at the time the work was made